

## Product datasheet for CR559245

### Tissue Total RNA, Gastroesophageal junction

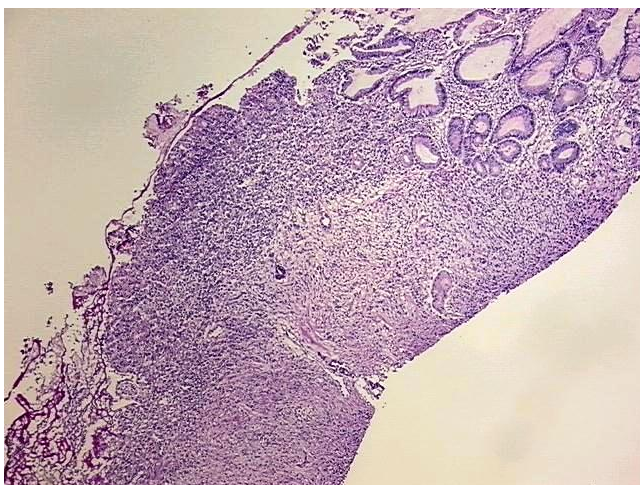
#### Product data:

Product Type:	Total RNA
Disease State:	Cancer
Diagnosis Category:	Esophageal/Gastroesophageal Cancer
Tissue:	Gastroesophageal junction
Frozen Sample ID:	FR00024AEE
Case ID:	CU0000006298
Prep:	1
Vial ID:	RN00001259
Tissue of Origin:	Gastroesophageal junction
Site of Finding:	Gastroesophageal junction
Appearance:	Tumor
Sample Diagnosis (from Pathology Verification):	Adenocarcinoma of gastroesophageal junction
Normal:	20%
Lesional:	0%
Tumor:	70%
Tumor Hypo/Acellular Stroma:	10%
Tumor Hypercellular Stroma:	0%
Necrosis:	0%
Bioanalyzer Ratio (28S/18S):	1.08
CASE Diagnosis (from medical center path report):	Adenocarcinoma of gastroesophageal junction
Age:	71

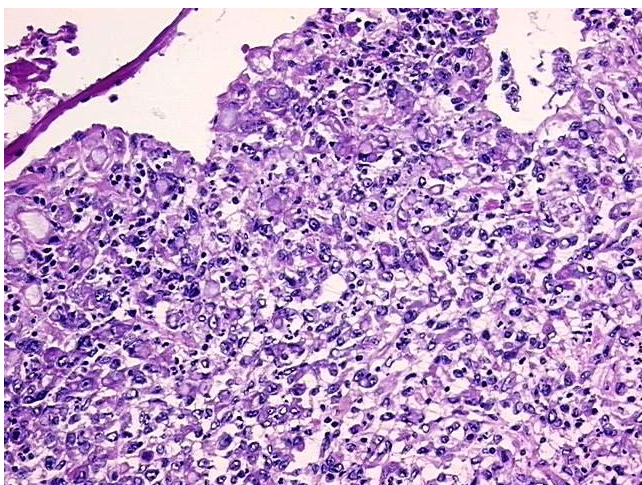


[View online »](#)

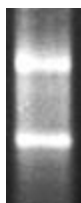
Gender:	Male
Tumor Grade:	AJCC G4: Undifferentiated
Minimum Stage Grouping:	III
T (Extent of Primary Tumor):	T3
N (Lymph node metastasis):	N1
M (Distant metastasis):	MX
Storage:	Store tissue total RNA at -80°C.
Stability:	These products are stable for one year from date of shipping when stored at -80°C without repeated freeze/thaws.

**Product images:**

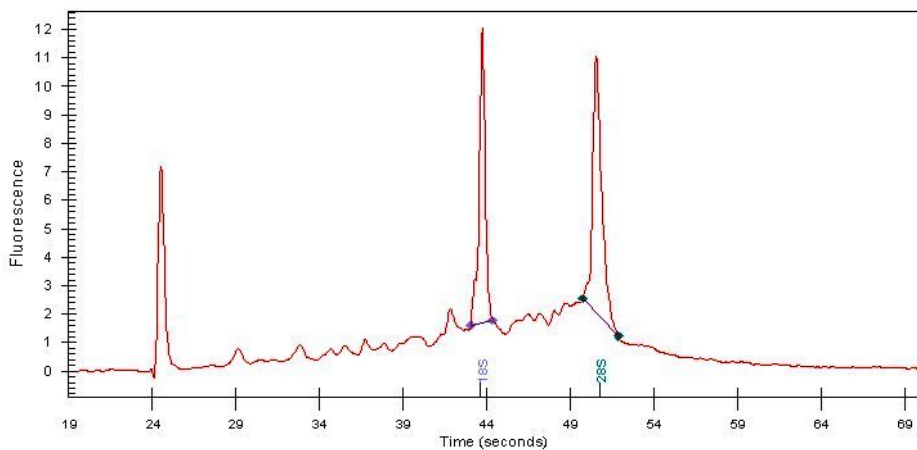
4x Image



20x Image



RNA Gel Image



RNA Electropherogram Image



RNA RT-PCR Image