

Product datasheet for CR559232

Tissue Total RNA, Lung

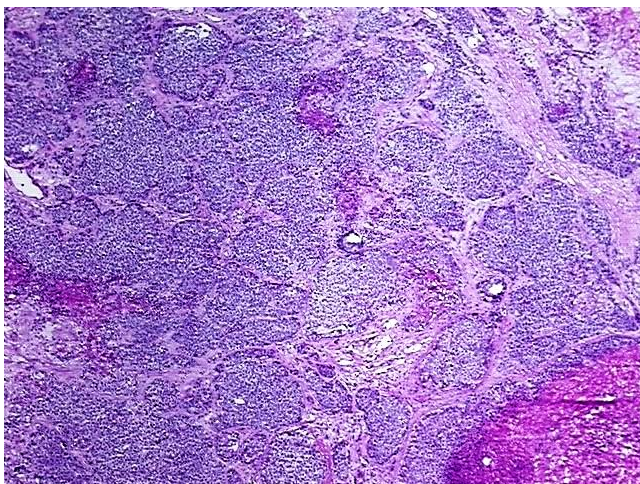
Product data:

Product Type:	Total RNA
Disease State:	Cancer
Diagnosis Category:	Lung Cancer
Tissue:	Lung
Frozen Sample ID:	FR0001CE52
Case ID:	CI0000005595
Prep:	5
Vial ID:	RN00003880
Tissue of Origin:	Lung
Site of Finding:	Lung
Appearance:	Tumor
Sample Diagnosis (from Pathology Verification):	Carcinoma of lung, squamous cell
Normal:	0%
Lesional:	0%
Tumor:	50%
Tumor Hypo/Acellular Stroma:	10%
Tumor Hypercellular Stroma:	0%
Necrosis:	40%
Bioanalyzer Ratio (28S/18S):	1.62
CASE Diagnosis (from medical center path report):	Carcinoma of lung, squamous cell
Age:	41

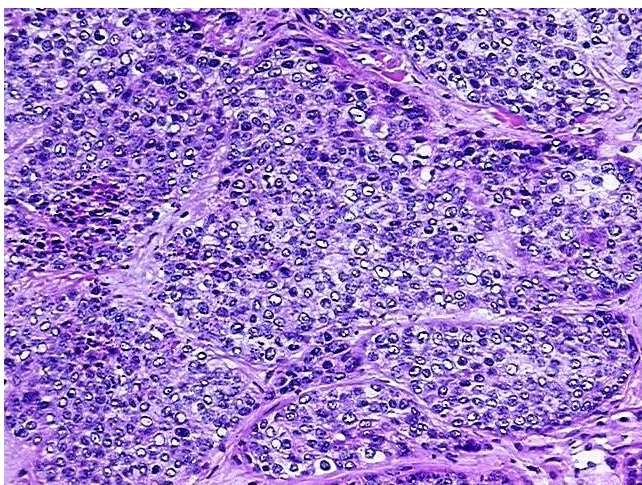

[View online »](#)

Gender:	Female
Race:	White or Caucasian
Tumor Grade:	AJCC G3: Poorly differentiated
Minimum Stage Grouping:	IB
T (Extent of Primary Tumor):	T2
N (Lymph node metastasis):	N0
M (Distant metastasis):	MX
Diagnostic Test Results:	ERBB1 ~ EGFR ~ Epidermal growth factor receptor ! by IHC,Positive; HER2 ~ ERBB2 ~ Neu ! by IHC,Negative
Storage:	Store tissue total RNA at -80°C.
Stability:	These products are stable for one year from date of shipping when stored at -80°C without repeated freeze/thaws.

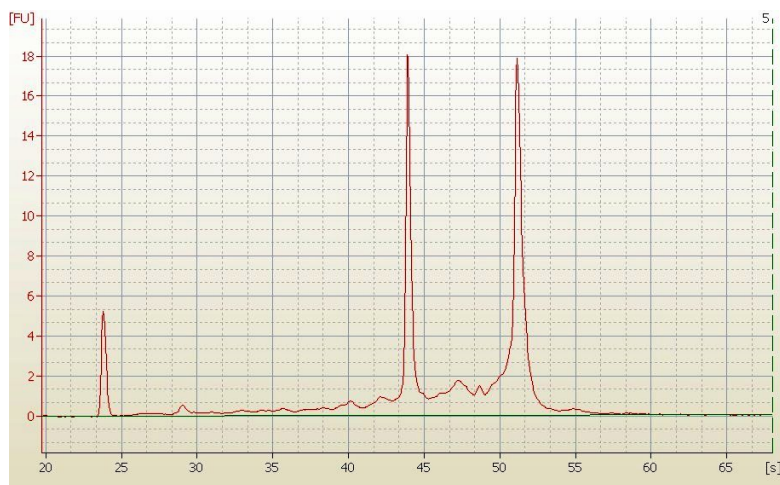
Product images:



4x Image



20x Image



RNA Electropherogram Image



RNA RT-PCR Image