

Product datasheet for CR559231

Tissue Total RNA, Endometrium

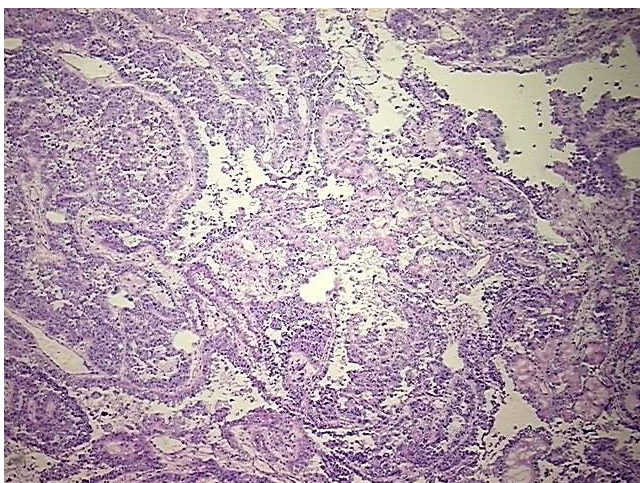
Product data:

| | |
|---|---------------------------------------|
| Product Type: | Total RNA |
| Disease State: | Cancer |
| Diagnosis Category: | Endometrial Cancer |
| Tissue: | Endometrium |
| Frozen Sample ID: | FR65EDE9DE |
| Case ID: | CI0000005560 |
| Prep: | 1 |
| Vial ID: | RN00003AEB |
| Tissue of Origin: | Endometrium |
| Site of Finding: | Uterus |
| Appearance: | Tumor |
| Sample Diagnosis (from Pathology Verification): | Adenocarcinoma of endometrium, serous |
| Normal: | 0% |
| Lesional: | 0% |
| Tumor: | 70% |
| Tumor Hypo/Acellular Stroma: | 20% |
| Tumor Hypercellular Stroma: | 0% |
| Necrosis: | 10% |
| Bioanalyzer Ratio (28S/18S): | 1.88 |
| CASE Diagnosis (from medical center path report): | Adenocarcinoma of endometrium, serous |
| Age: | 89 |

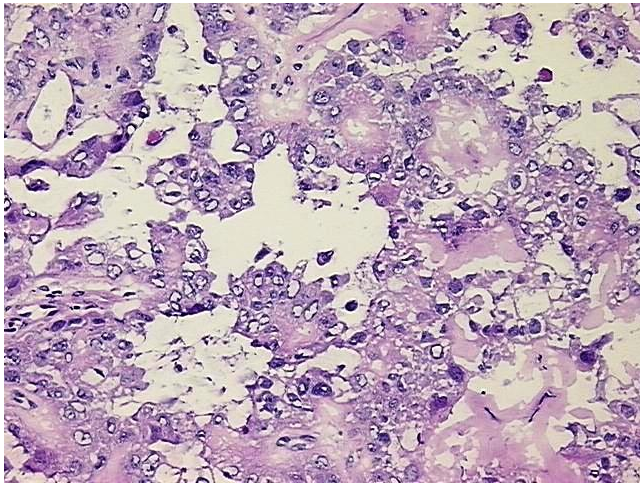


[View online »](#)

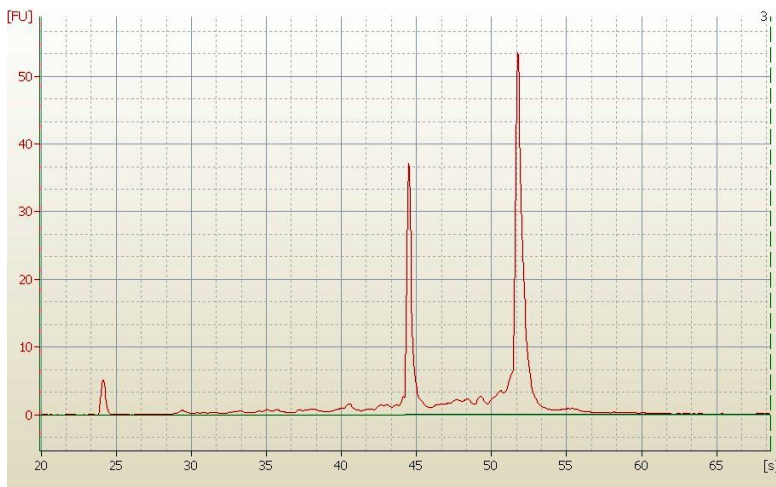
| | |
|------------------------------|--|
| Gender: | Female |
| Race: | White or Caucasian |
| Tumor Grade: | FIGO G3: Poorly differentiated |
| Minimum Stage Grouping: | IB |
| T (Extent of Primary Tumor): | T1b |
| N (Lymph node metastasis): | N0 |
| M (Distant metastasis): | MX |
| Storage: | Store tissue total RNA at -80°C. |
| Stability: | These products are stable for one year from date of shipping when stored at -80°C without repeated freeze/thaws. |

Product images:

4x Image



20x Image



RNA Electropherogram Image



RNA RT-PCR Image