

Product datasheet for CR559213

Tissue Total RNA, Kidney

Product data:

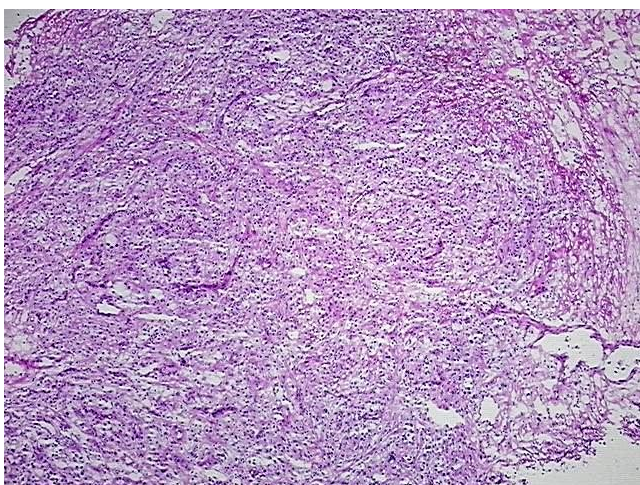
Product Type:	Total RNA
Disease State:	Cancer
Diagnosis Category:	Renal Cell Carcinoma
Tissue:	Kidney
Frozen Sample ID:	FR00020F25
Case ID:	CI0000006064
Prep:	3
Vial ID:	RN000034F3
Tissue of Origin:	Kidney
Site of Finding:	Kidney
Appearance:	Tumor
Sample Diagnosis (from Pathology Verification):	Carcinoma of kidney, renal cell, clear cell
Normal:	0%
Lesional:	0%
Tumor:	50%
Tumor Hypo/Acellular Stroma:	10%
Tumor Hypercellular Stroma:	30%
Necrosis:	10%
Pathology Verification notes from H&E review:	10% lymphocytes in cellular stroma
Bioanalyzer Ratio (28S/18S):	1.55



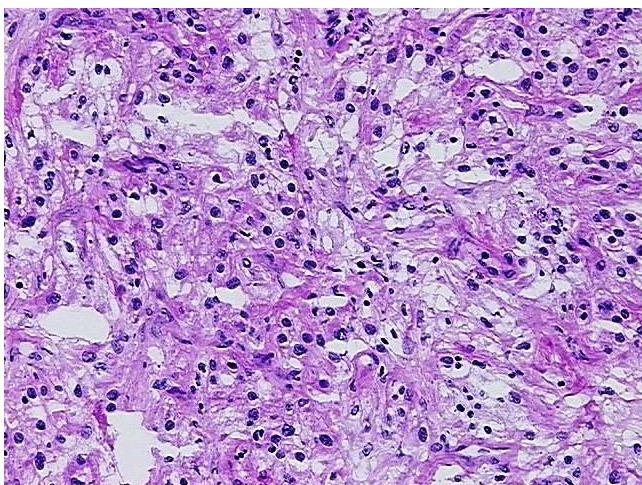
[View online »](#)

CASE Diagnosis (from medical center path report):	Carcinoma of kidney, renal cell, clear cell
Age:	53
Gender:	Male
Tumor Grade:	Fuhrman G4: Nuclei bizarre and multilobated
Minimum Stage Grouping:	II
T (Extent of Primary Tumor):	T2
N (Lymph node metastasis):	N0
M (Distant metastasis):	MX
Storage:	Store tissue total RNA at -80°C.
Stability:	These products are stable for one year from date of shipping when stored at -80°C without repeated freeze/thaws.

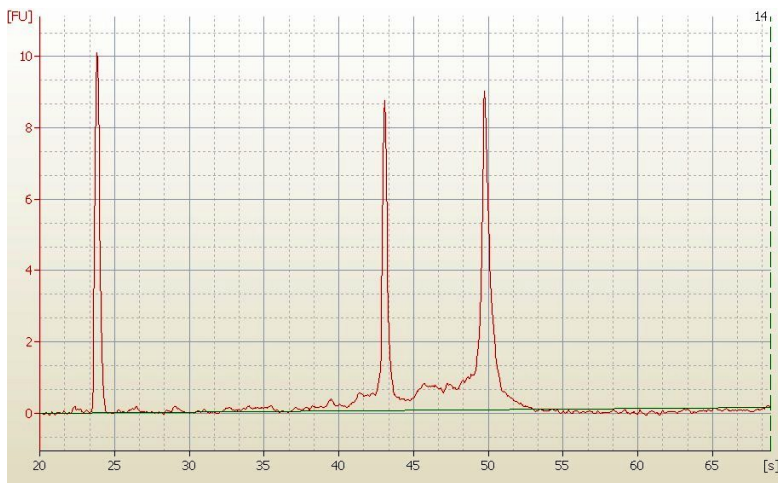
Product images:



4x Image



20x Image



RNA Electropherogram Image