

Product datasheet for **CR559193**

Tissue Total RNA, Kidney

Product data:

| | |
|---|---|
| Product Type: | Total RNA |
| Disease State: | Cancer |
| Diagnosis Category: | Renal Cell Carcinoma |
| Tissue: | Kidney |
| Frozen Sample ID: | FR00019ADA |
| Case ID: | CI0000005755 |
| Prep: | 3 |
| Vial ID: | RN000034D5 |
| Tissue of Origin: | Kidney |
| Site of Finding: | Lung |
| Appearance: | Tumor |
| Sample Diagnosis (from Pathology Verification): | Carcinoma of kidney, renal cell, clear cell, metastatic |
| Normal: | 0% |
| Lesional: | 0% |
| Tumor: | 55% |
| Tumor Hypo/Acellular Stroma: | 10% |
| Tumor Hypercellular Stroma: | 35% |
| Necrosis: | 0% |
| Pathology Verification notes from H&E review: | 35% fibrous stroma |
| Bioanalyzer Ratio (28S/18S): | 0.55 |



[View online »](#)

CASE Diagnosis (from medical center path report): Carcinoma of kidney, renal cell, clear cell, metastatic

Age: 51

Gender: Male

Tumor Grade: Not Reported

Minimum Stage Grouping: IV

T (Extent of Primary Tumor): TX

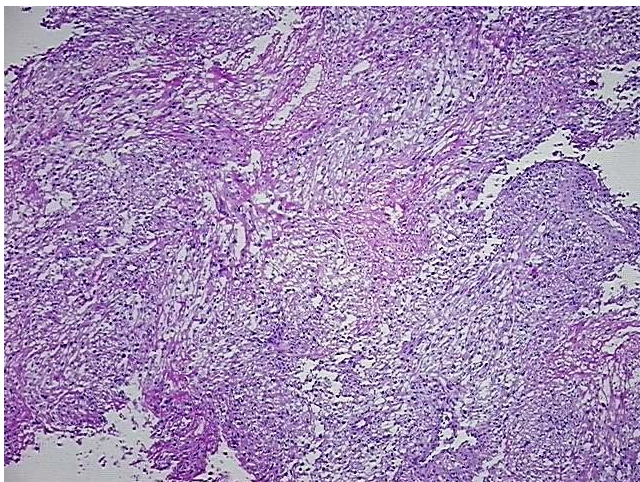
N (Lymph node metastasis): N1

M (Distant metastasis): M1

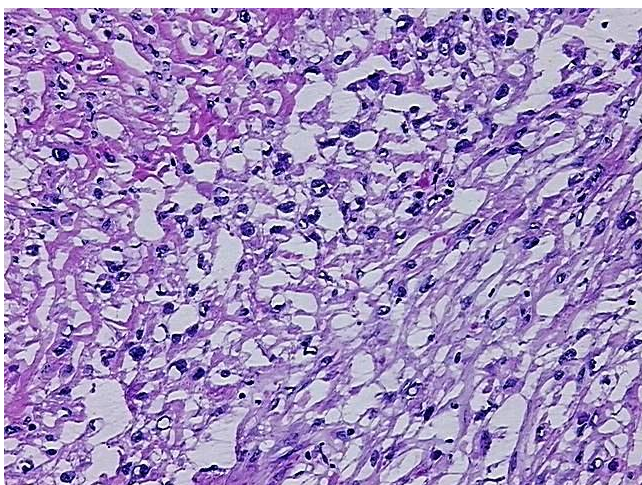
Storage: Store tissue total RNA at -80°C.

Stability: These products are stable for one year from date of shipping when stored at -80°C without repeated freeze/thaws.

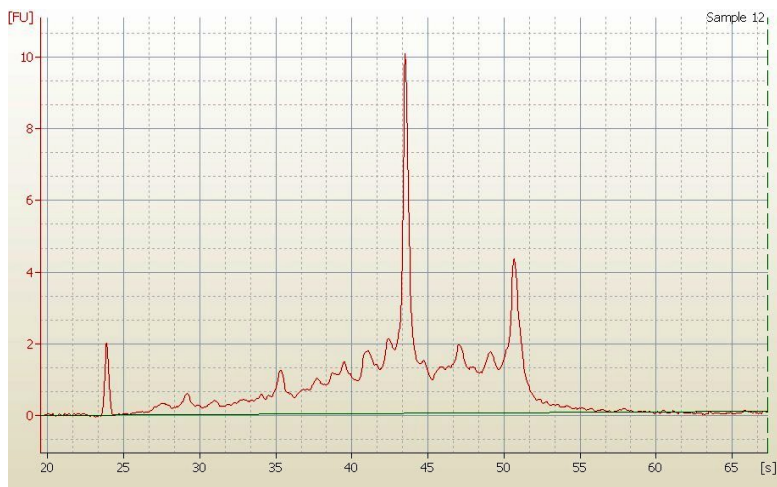
Product images:



4x Image



20x Image



RNA Electropherogram Image



RNA RT-PCR Image