

## Product datasheet for **CR559188**

### Tissue Total RNA, Kidney

#### Product data:

Product Type:	Total RNA
Disease State:	Cancer
Diagnosis Category:	Renal Cell Carcinoma
Tissue:	Kidney
Frozen Sample ID:	FR00017877
Case ID:	CU0000005135
Prep:	1
Vial ID:	RN00003719
Tissue of Origin:	Kidney
Site of Finding:	Lung
Appearance:	Tumor
Sample Diagnosis (from Pathology Verification):	Carcinoma of kidney, renal cell, metastatic
Normal:	0%
Lesional:	0%
Tumor:	80%
Tumor Hypo/Acellular Stroma:	15%
Tumor Hypercellular Stroma:	5%
Necrosis:	0%
Pathology Verification notes from H&E review:	renal cell tumor metastasized to lung
Bioanalyzer Ratio (28S/18S):	1.37



[View online »](#)

**CASE Diagnosis (from medical center path report):** Adenocarcinoma, metastatic, consistent with renal cell primary

**Age:** 51

**Gender:** Male

**Tumor Grade:** Not Reported

**Minimum Stage** IV

**Grouping:**

**T (Extent of Primary Tumor):** TX

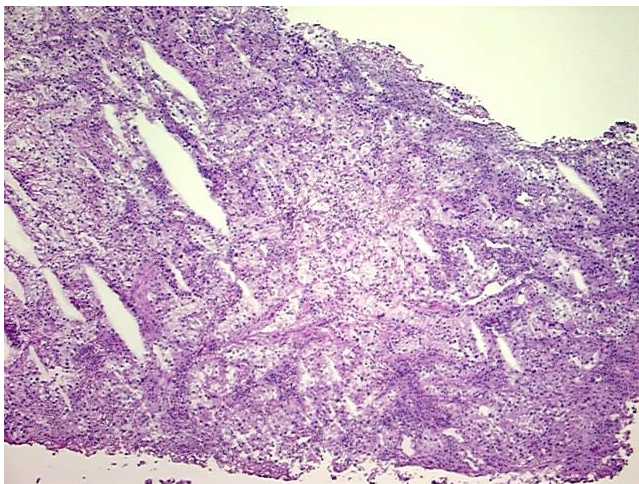
**N (Lymph node metastasis):** NX

**M (Distant metastasis):** M1

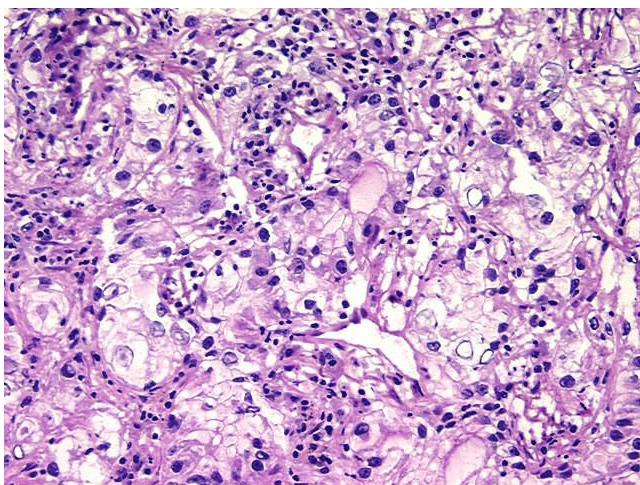
**Storage:** Store tissue total RNA at -80°C.

**Stability:** These products are stable for one year from date of shipping when stored at -80°C without repeated freeze/thaws.

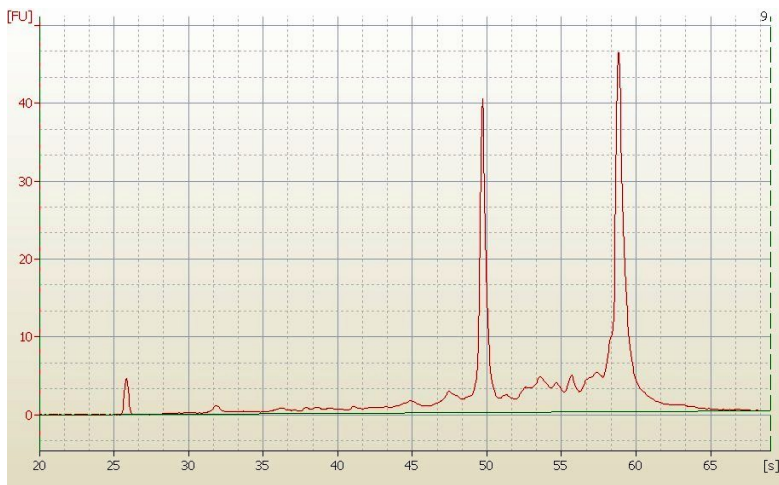
### Product images:



4x Image



20x Image



RNA Electropherogram Image



RNA RT-PCR Image