

Product datasheet for **CR559138**

Tissue Total RNA, Soft tissue

Product data:

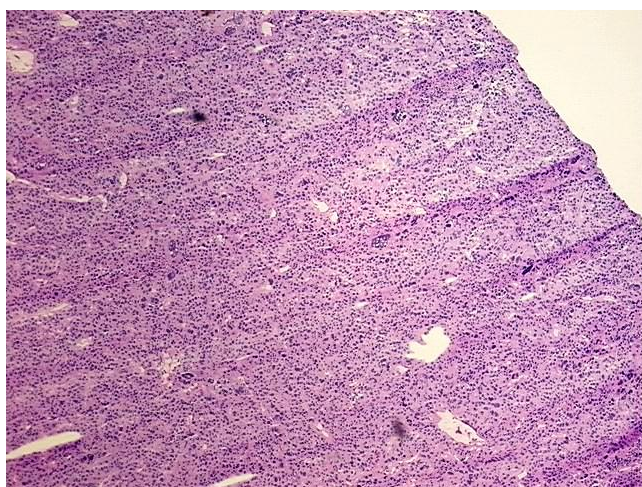
Product Type:	Total RNA
Disease State:	Cancer
Diagnosis Category:	Sarcoma
Tissue:	Soft tissue
Frozen Sample ID:	FR000271ED
Case ID:	CI0000008204
Prep:	1
Vial ID:	RN00001250
Tissue of Origin:	Soft tissue
Site of Finding:	Chest wall
Appearance:	Tumor
Sample Diagnosis (from Pathology Verification):	Histiocytoma, malignant fibrous
Normal:	0%
Lesional:	0%
Tumor:	95%
Tumor Hypo/Acellular Stroma:	2%
Tumor Hypercellular Stroma:	0%
Necrosis:	3%
Pathology Verification notes from H&E review:	Pathology report states that an extensive immunohistochemical work-up was performed and that a malignant fibrohistiocytoma is favored
Bioanalyzer Ratio (28S/18S):	1.5



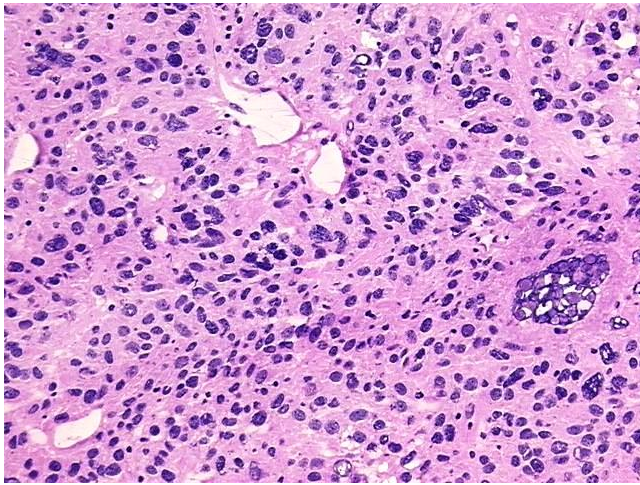
[View online »](#)

CASE Diagnosis (from medical center path report):	Histiocytoma, malignant fibrous
Age:	72
Gender:	Female
Race:	White or Caucasian
Tumor Grade:	AJCC G3-4: Poorly differentiated or undifferentiated
Minimum Stage Grouping:	III
T (Extent of Primary Tumor):	T2b
N (Lymph node metastasis):	NX
M (Distant metastasis):	MX
Diagnostic Test Results:	CD227 ~ MUC1 ~ EMA ~ CA15-3 ! by IHC,Negative; Cytokeratin (Pan) ~ Keratin, Pan ! by IHC,Negative; Vimentin ~ VIM ! by IHC,Positive; S100 protein,Negative; HMB45 melanoma antigen ~ GP100 ! by IHC,Negative; Cytokeratin 7 ~ CK7 ! by IHC,Negati
Storage:	Store tissue total RNA at -80°C.
Stability:	These products are stable for one year from date of shipping when stored at -80°C without repeated freeze/thaws.

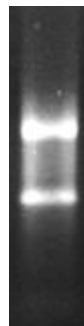
Product images:



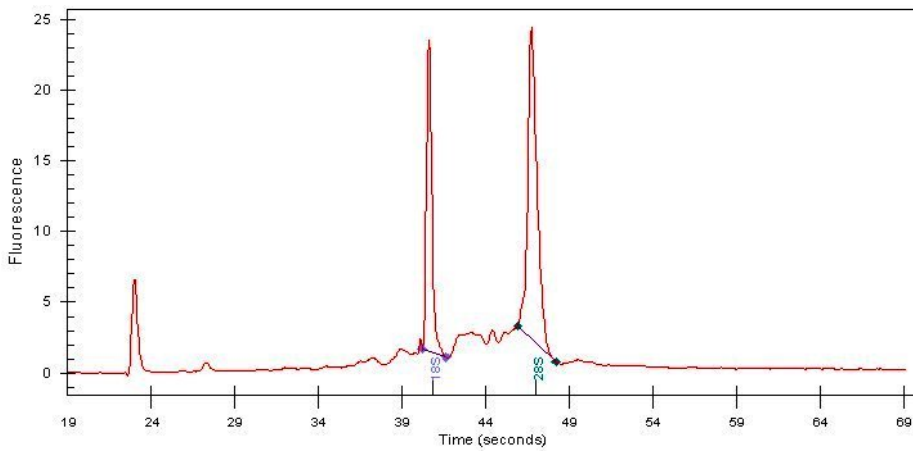
4x Image



20x Image



RNA Gel Image



RNA Electropherogram Image



RNA RT-PCR Image