

## Product datasheet for CR559130

### Tissue Total RNA, Lung

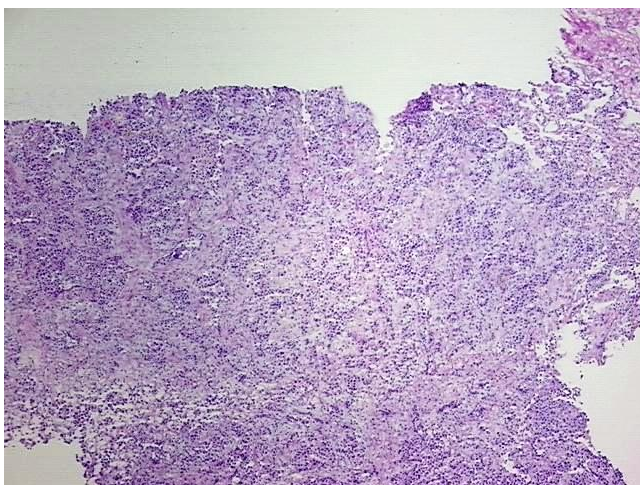
#### Product data:

Product Type:	Total RNA
Disease State:	Cancer
Diagnosis Category:	Lung Cancer
Tissue:	Lung
Frozen Sample ID:	FR00006A27
Case ID:	CU0000001689
Prep:	3
Vial ID:	RN0000375A
Tissue of Origin:	Lung
Site of Finding:	Lung
Appearance:	Tumor
Sample Diagnosis (from Pathology Verification):	Adenocarcinoma of lung
Normal:	30%
Lesional:	0%
Tumor:	50%
Tumor Hypo/Acellular Stroma:	5%
Tumor Hypercellular Stroma:	15%
Necrosis:	0%
Bioanalyzer Ratio (28S/18S):	1.54
CASE Diagnosis (from medical center path report):	Adenocarcinoma of lung
Age:	66

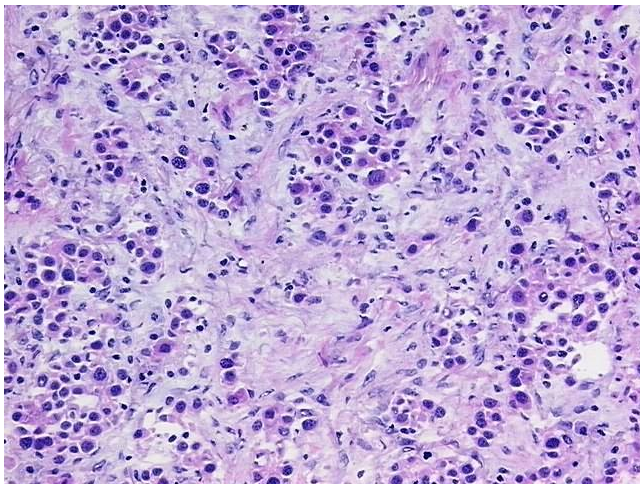


[View online »](#)

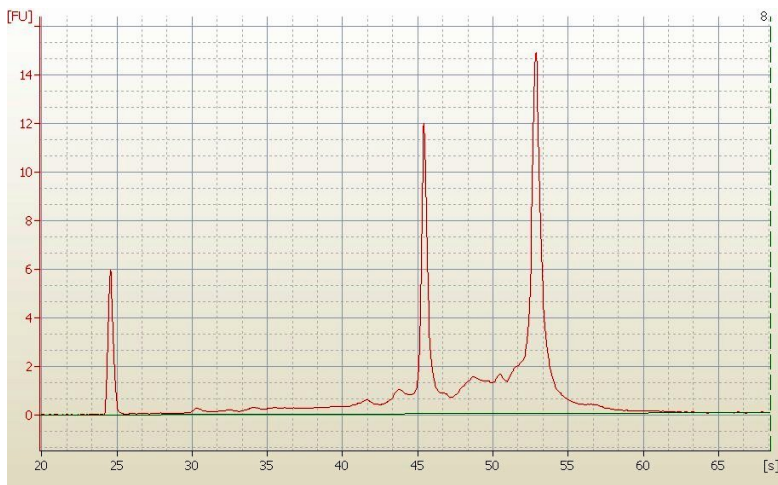
Gender:	Male
Tumor Grade:	Not Reported
Minimum Stage Grouping:	IB
T (Extent of Primary Tumor):	T2
N (Lymph node metastasis):	NX
M (Distant metastasis):	MX
Storage:	Store tissue total RNA at -80°C.
Stability:	These products are stable for one year from date of shipping when stored at -80°C without repeated freeze/thaws.

**Product images:**

4x Image



20x Image



RNA Electropherogram Image



RNA RT-PCR Image