

Product datasheet for CR559109

Tissue Total RNA, Lung

Product data:

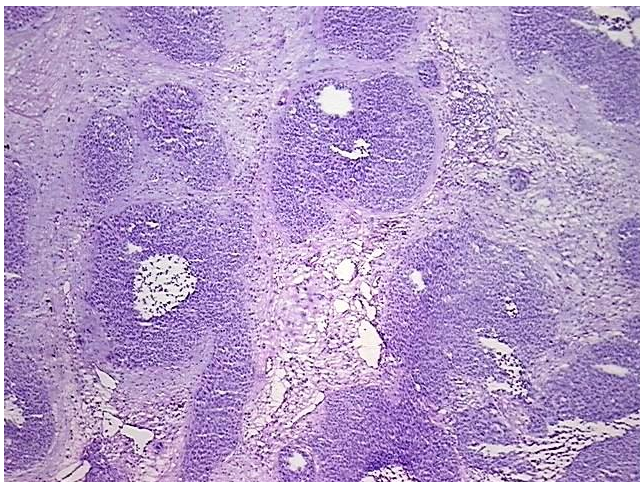
Product Type:	Total RNA
Disease State:	Cancer
Diagnosis Category:	Lung Cancer
Tissue:	Lung
Frozen Sample ID:	FR65EE1921
Case ID:	CI0000007303
Prep:	3
Vial ID:	RN000011F6
Tissue of Origin:	Lung
Site of Finding:	Lymph node
Appearance:	Tumor
Sample Diagnosis (from Pathology Verification):	Carcinoma of lung, non-small cell, metastatic
Normal:	0%
Lesional:	0%
Tumor:	50%
Tumor Hypo/Acellular Stroma:	40%
Tumor Hypercellular Stroma:	0%
Necrosis:	10%
Pathology Verification notes from H&E review:	the immunohistochemistry finding favors squamous differentiation; no residual lymphoid tissue identified
Bioanalyzer Ratio (28S/18S):	1.2



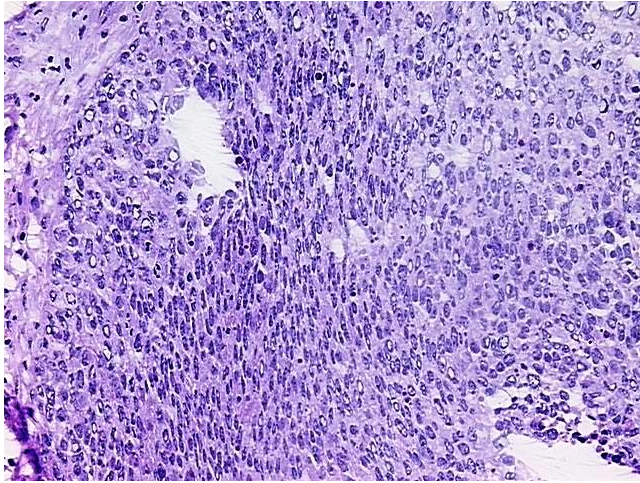
[View online »](#)

CASE Diagnosis (from medical center path report):	Carcinoma of lung, non-small cell
Age:	63
Gender:	Male
Tumor Grade:	AJCC G3: Poorly differentiated
Minimum Stage Grouping:	IIB
T (Extent of Primary Tumor):	T2
N (Lymph node metastasis):	N1
M (Distant metastasis):	MX
Diagnostic Test Results:	Cytokeratins (5 and 6) ~ CK5,6 ! by IHC,Positive, weak; Neuron specific enolase ~ NSE ! by IHC,Negative; Synaptophysin ~ SYN ! by IHC,Negative; Chromogranin A ~ Parathyroid secretory protein 1 ! by IHC,Negative
Storage:	Store tissue total RNA at -80°C.
Stability:	These products are stable for one year from date of shipping when stored at -80°C without repeated freeze/thaws.

Product images:



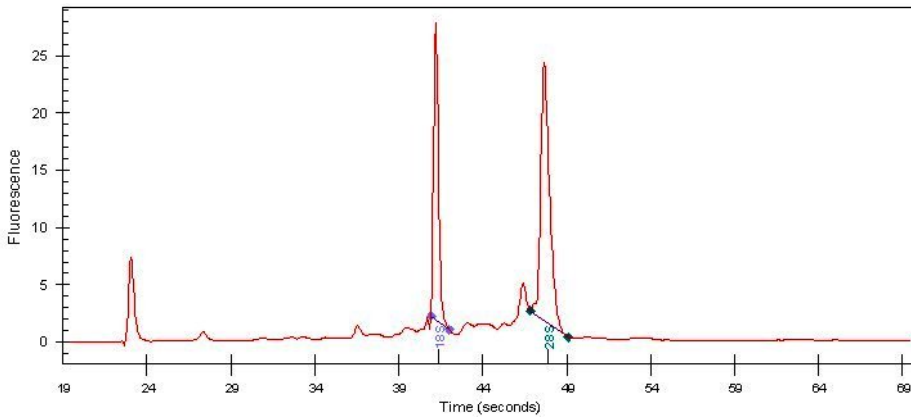
4x Image



20x Image



RNA Gel Image



RNA Electropherogram Image



RNA RT-PCR Image