

## Product datasheet for **CR559094**

### Tissue Total RNA, Soft tissue

#### Product data:

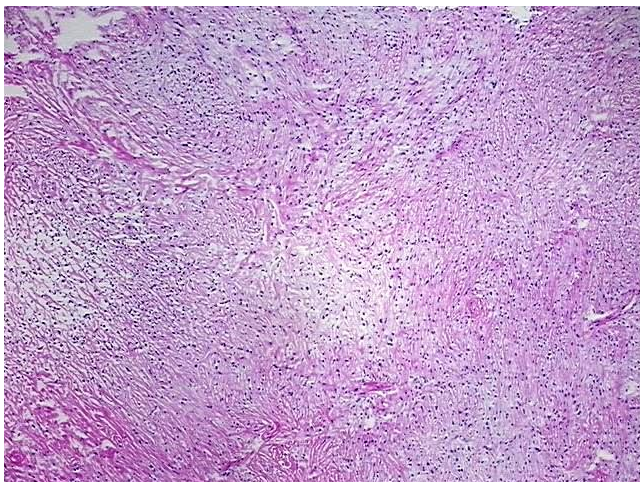
Product Type:	Total RNA
Disease State:	Cancer
Diagnosis Category:	Sarcoma
Tissue:	Soft tissue
Frozen Sample ID:	FR00022379
Case ID:	CI0000007086
Prep:	7
Vial ID:	RN00003C36
Tissue of Origin:	Soft tissue
Site of Finding:	Neck
Appearance:	Tumor
Sample Diagnosis (from Pathology Verification):	Sarcoma
Normal:	0%
Lesional:	0%
Tumor:	70%
Tumor Hypo/Acellular Stroma:	0%
Tumor Hypercellular Stroma:	30%
Necrosis:	0%
Pathology Verification notes from H&E review:	low grade spindle cell sarcoma with probable fibroblastic/myofibroblastic differentiation
Bioanalyzer Ratio (28S/18S):	1.53



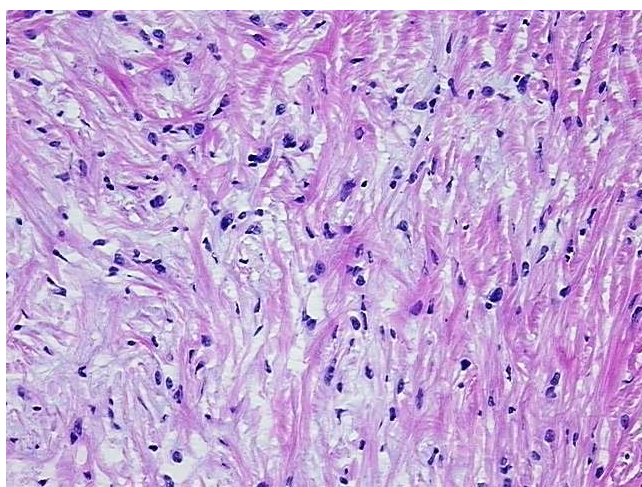
[View online »](#)

<b>CASE Diagnosis (from medical center path report):</b>	Sarcoma
<b>Age:</b>	45
<b>Gender:</b>	Male
<b>Tumor Grade:</b>	AJCC G1: Well differentiated
<b>Minimum Stage Grouping:</b>	I
<b>T (Extent of Primary Tumor):</b>	T1a
<b>N (Lymph node metastasis):</b>	NX
<b>M (Distant metastasis):</b>	MX
<b>Diagnostic Test Results:</b>	CD227 ~ MUC1 ~ EMA ~ CA15-3 ! by IHC,Positive; Smooth muscle actin ~ SMA ~ Alpha-SMA ! by IHC,Negative; S100 protein,Negative; Glial Fibrillary Acidic Protein ~ GFAP,Negative; Desmin ! by IHC,Positive; CD34 ~ HPCA ! by IHC,Negative
<b>Storage:</b>	Store tissue total RNA at -80°C.
<b>Stability:</b>	These products are stable for one year from date of shipping when stored at -80°C without repeated freeze/thaws.

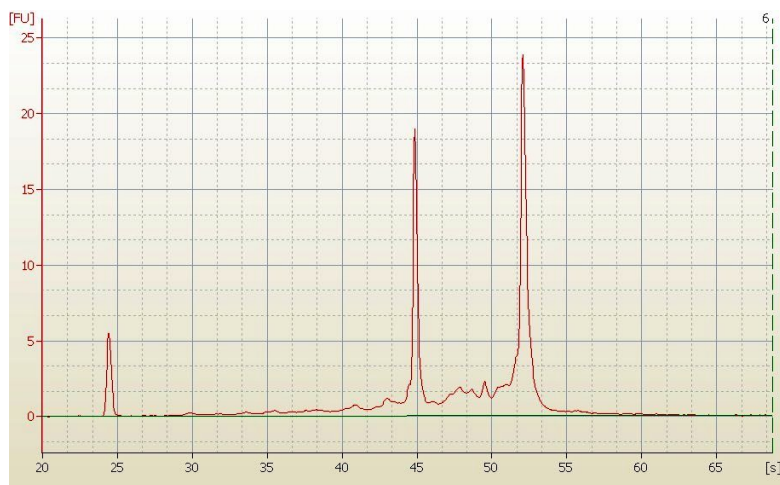
### Product images:



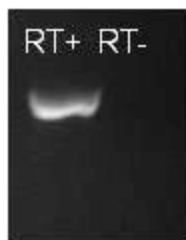
4x Image



20x Image



RNA Electropherogram Image



RNA RT-PCR Image