

Product datasheet for CR559093

Tissue Total RNA, Soft tissue

Product data:

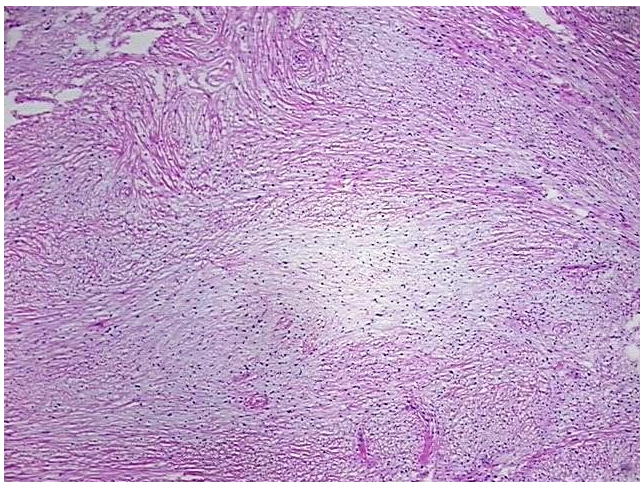
Product Type:	Total RNA
Disease State:	Cancer
Diagnosis Category:	Sarcoma
Tissue:	Soft tissue
Frozen Sample ID:	FR0002237A
Case ID:	CI0000007086
Prep:	8
Vial ID:	RN00003C37
Tissue of Origin:	Soft tissue
Site of Finding:	Neck
Appearance:	Tumor
Sample Diagnosis (from Pathology Verification):	Sarcoma
Normal:	0%
Lesional:	0%
Tumor:	75%
Tumor Hypo/Acellular Stroma:	0%
Tumor Hypercellular Stroma:	25%
Necrosis:	0%
Pathology Verification notes from H&E review:	low grade spindle cell sarcoma with probable fibroblastic/myofibroblastic differentiation
Bioanalyzer Ratio (28S/18S):	1.37



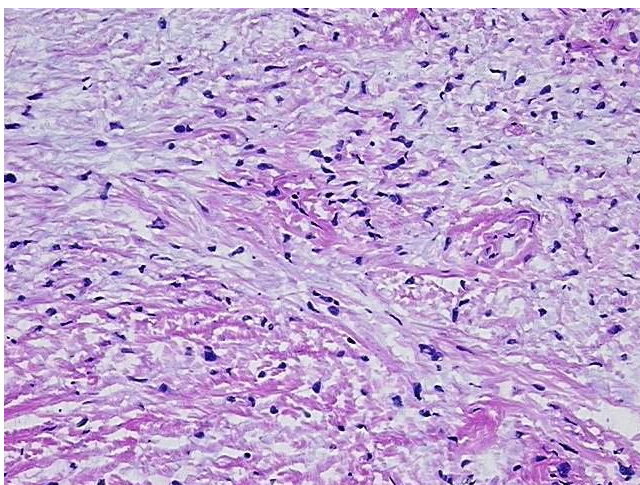
[View online »](#)

CASE Diagnosis (from medical center path report):	Sarcoma
Age:	45
Gender:	Male
Tumor Grade:	AJCC G1: Well differentiated
Minimum Stage Grouping:	I
T (Extent of Primary Tumor):	T1a
N (Lymph node metastasis):	NX
M (Distant metastasis):	MX
Diagnostic Test Results:	CD227 ~ MUC1 ~ EMA ~ CA15-3 ! by IHC,Positive; Smooth muscle actin ~ SMA ~ Alpha-SMA ! by IHC,Negative; S100 protein,Negative; Glial Fibrillary Acidic Protein ~ GFAP,Negative; Desmin ! by IHC,Positive; CD34 ~ HPCA ! by IHC,Negative
Storage:	Store tissue total RNA at -80°C.
Stability:	These products are stable for one year from date of shipping when stored at -80°C without repeated freeze/thaws.

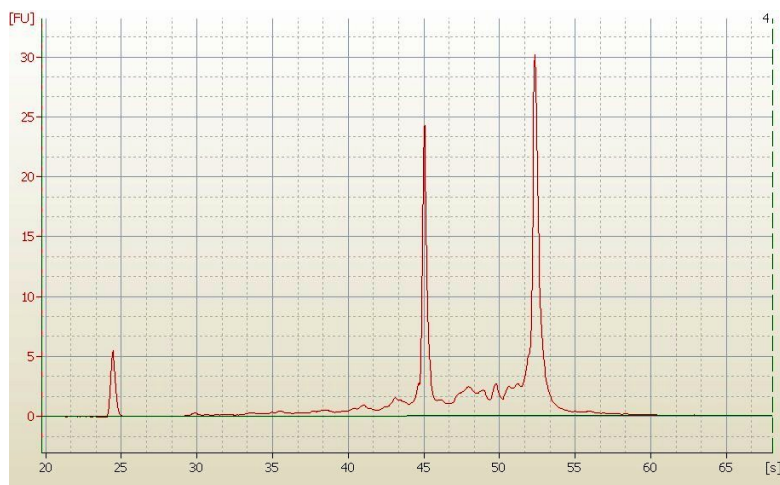
Product images:



4x Image



20x Image



RNA Electropherogram Image



RNA RT-PCR Image