

## Product datasheet for CR519754

### Tissue Total RNA, Liver

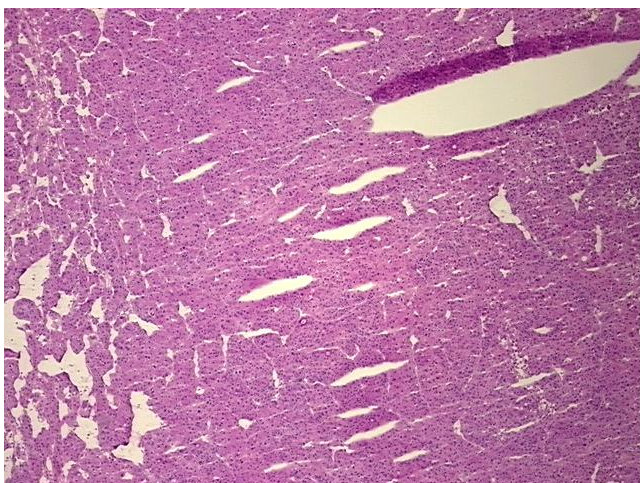
#### Product data:

Product Type:	Total RNA
Disease State:	Cancer
Diagnosis Category:	Liver Cancer
Tissue:	Liver
Frozen Sample ID:	FR00026EDE
Case ID:	CI0000008148
Prep:	n/a
Vial ID:	FR00026EDE
Tissue of Origin:	Liver
Site of Finding:	Liver
Appearance:	Tumor
Sample Diagnosis (from Pathology Verification):	Carcinoma of liver, hepatocellular
Normal:	0%
Lesional:	0%
Tumor:	95%
Tumor Hypo/Acellular Stroma:	5%
Tumor Hypercellular Stroma:	0%
Necrosis:	0%
Bioanalyzer Ratio (28S/18S):	1.4
CASE Diagnosis (from medical center path report):	Carcinoma of liver, hepatocellular
Age:	81

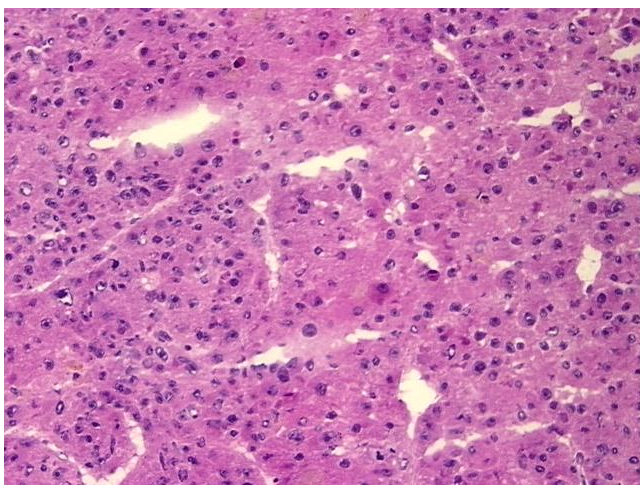


[View online »](#)

Gender:	Male
Race:	White or Caucasian
Tumor Grade:	AJCC G1: Well differentiated
Minimum Stage Grouping:	I
T (Extent of Primary Tumor):	T1
N (Lymph node metastasis):	NX
M (Distant metastasis):	MX
Storage:	Store tissue total RNA at -80°C.
Stability:	These products are stable for one year from date of shipping when stored at -80°C without repeated freeze/thaws.

**Product images:**

4x Image



20x Image