

## Product datasheet for **CL082F**

### Rat Monoclonal Antibody [Clone ID: CTVB10b]

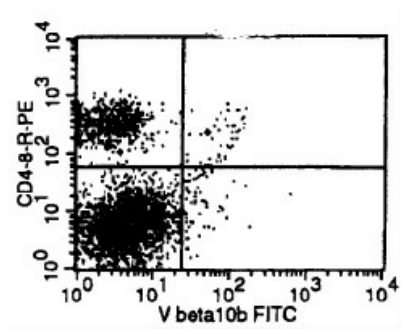
#### Product data:

Product Type:	Primary Antibodies
Clone Name:	CTVB10b
Applications:	FC
Recommended Dilution:	FC
Reactivity:	Mouse
Host:	Rat
Isotype:	IgG2b
Clonality:	Monoclonal
Formulation:	PBS, 0.09% NaN <sub>3</sub> and EIA grade BSA as a stabilizing protein to bring total protein concentration to 4-5 mg/ml.
Concentration:	lot specific
Purification:	Liquid, purified.
Conjugation:	Unconjugated
Storage:	Store the antibody undiluted at 2-8°C for one month or (in aliquots) at -20°C for longer. Avoid repeated freezing and thawing. This product is photosensitive and should be protected from light. Shelf life: one year from despatch.



[View online »](#)

## Product images:



Cell source: Spleen  
Percentage of cells above control: 1.4%