

Product datasheet for **CL039FX**

Thy1 Mouse Monoclonal Antibody [Clone ID: 5a-8]

Product data:

Product Type:	Primary Antibodies
Clone Name:	5a-8
Applications:	FC
Recommended Dilution:	Flow Cytometry.
Reactivity:	Mouse
Host:	Mouse
Isotype:	IgG2b
Clonality:	Monoclonal
Immunogen:	CBA/J. Donor: AKR/J Spleen. Fusion Partner: Spleen from immunized recipient fused with myeloma P3-NSI-1-Ag4-1.
Specificity:	This monoclonal antibody reacts with all T lymphocytes from mouse strains expressing the Thy 1.2 phenotype (e.g. C57BL/6, C3H/He, DBA/2, CBA/J, BALB/c), but does not react with lymphocytes expressing the Thy 1.1 phenotype [e.g. AKR/J, B6.PL(74NS)].
Formulation:	PBS, 0.02% NaN ₃ and EIA grade BSA as a stabilizing protein to bring total protein concentration to 4-5 mg/ml Label: FITC State: Liquid purified IgG
Concentration:	lot specific
Purification:	Protein G Chromatography
Conjugation:	FITC
Storage:	Store the antibody undiluted at 2-8°C for one month or (in aliquots) at -20°C for longer. Avoid repeated freezing and thawing. This product is photosensitive and should be protected from light.
Stability:	Shelf life: one year from despatch.
Gene Name:	thymus cell antigen 1, theta
Database Link:	Entrez Gene 21838 Mouse P01831



[View online »](#)

Background: CD90 / Thy1 antigen is a GPI linked glycoprotein member of the Immunoglobulin superfamily. It is expressed on murine T cells, thymocytes, neural cells, cells of granulocytic lineage, early hematopoietic progenitors, fibroblasts, neurons and Kupffer's cells. Thy1 may play a role in cell to cell or cell to ligand interactions during synaptogenesis and other events in the brain. It is found in most mouse strains except AKR/J, A, Thy1.1 and B6.PL (74NS) expressing Thy1.1.

Synonyms: Thy-1, THY1, CDw90

Note: Protocol: **FLOW CYTOMETRY ANALYSIS:**

Method:

1. Prepare a cell suspension in media A. For cell preparations, deplete the red blood cell population with Lympholyte®-M cell separation medium.
2. Wash 2 times.
3. Resuspend the cells to a concentration of 2×10^7 cells/ml in media A. Add 50 μ l of this suspension to each tube (each tube will then contain 1×10^6 cells, representing 1 test).
4. To each tube, add 1/50 -1/100 dilution in 50 μ l of this Ab per 10^6 cells.
5. Vortex the tubes to ensure thorough mixing of antibody and cells.
6. Incubate the tubes for 30 minutes at 4°C. (It is recommended that tubes are protected from light since most fluorochromes are light sensitive)
7. Wash 2 times at 4°C.
8. Resuspend the cell pellet in 50 μ l ice cold media B.
9. Transfer to suitable tubes for flow cytometric analysis containing 15 μ l of propidium iodide at 0.5 mg/ml in PBS. This stains dead cells by intercalating in DNA.

Media:

- A. Phosphate buffered saline (pH 7.2) + 5% normal serum of host species + sodium azide (100 μ l of 2M sodium azide in 100 mls).
- B. Phosphate buffered saline (pH 7.2) + 0.5% Bovine serum albumin + sodium azide (100 μ l of 2M sodium azide in 100 mls).

Results - Tissue Distribution:

Mouse Strain: BALB/c

Cell Concentration: 1×10^6 cells per tests

Antibody Concentration Used: 1/50 in 50 μ l/ 10^6 cells

Isotypic Control: FITC Mouse IgG2b

Cell Source Percentage of cells stained above control:

Thymus: 97.4%

Spleen: 52.6%

Results - Strain Distribution:

Tissue: Spleen

Cell Concentration: 1×10^6 cells per test

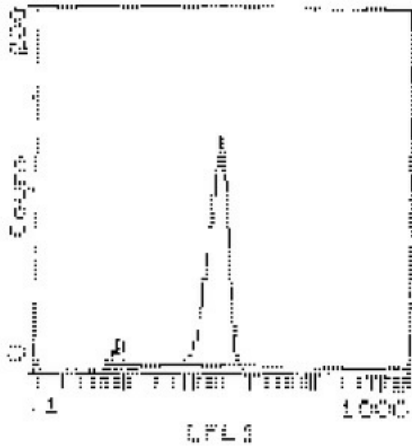
Antibody Concentration Used: 1/100 in 50 μ l/ 10^6 cells

Strains Tested: C57BL/6, C3H/He, CBA/J, BALB/c, ATL, AKR/J

Positive: C57BL/6, C3H/He, CBA/J, BALB/c, ATL

Negative: AKR

Product images:



Cell Source: Thymus - Percentage of cells stained above control: 97.4%