

Product datasheet for **CL023A**

Cd44 Rat Monoclonal Antibody [Clone ID: KM81]

Product data:

Product Type:	Primary Antibodies
Clone Name:	KM81
Applications:	FC, IHC
Reactivity:	Mouse
Host:	Rat
Isotype:	IgG2a
Clonality:	Monoclonal
Immunogen:	Bone Marrow Derived Stromal Cells (clone BMS2). Donor: Lou/MN Rat. Fusion Partner: SP2/0.
Specificity:	<p>This Antibody recognizes a 95 kDa glycoprotein found on most hematopoietic cells (1). It is thought to be important in the regulation of migratory properties of lymphocytes during development and the regulation of the interaction with bone marrow stromal cells during hematopoiesis (2,3). CD44 functions as a receptor for hyaluronate, although some cells expressing CD44 do not bind hyaluronate (3,4).</p> <p>This antibody has been shown to inhibit the growth of lymphoid and myeloid cells in long term bone marrow cultures (3). It also blocks the adhesive interactions of B cell hybridomas to a cloned stromal line or to hyaluronate coated dishes (4).</p>
Formulation:	PBS, no preservative, 0.2 mm filtered. State: Azide Free State: Liquid
Concentration:	lot specific
Purification:	Protein G Chromatography
Conjugation:	Unconjugated
Storage:	Store the antibody undiluted at 2-8°C for one month or (in aliquots) at -20°C for longer. Avoid repeated freezing and thawing.
Stability:	Shelf life: one year from despatch.
Gene Name:	CD44 antigen



[View online »](#)

Database Link: [Entrez Gene 12505 Mouse P15379](#)

Background: CD44 is a type 1 transmembrane glycoprotein also known as Phagocytic Glycoprotein 1 (pgp 1) and HCAM. CD44 is the receptor for hyaluronate and exists as a large number of different isoforms due to alternative RNA splicing. The major isoform expressed on lymphocytes, myeloid cells, and erythrocytes is a glycosylated type 1 transmembrane protein. Other isoforms contain glycosaminoglycans and are expressed on hematopoietic and non hematopoietic cells. CD44 is involved in adhesion of leukocytes to endothelial cells, stromal cells, and the extracellular matrix.

Synonyms: LHR, MDU2, MDU3, MIC4, CDw44, Epican, ECMR-III, HUTCH-I, Heparan sulfate proteoglycan, Hermes antigen, Hyaluronate receptor, PGP-1

Note: Protocol: **FLOW CYTOMETRY ANALYSIS:**

Method:

1. Prepare a cell suspension in media A. For cell preparations, deplete the red blood cell population with Lympholyte®-M cell separation medium.
2. Wash 2 times.
3. Resuspend the cells to a concentration of 2×10^7 cells/ml in media A. Add 50 μ l of this suspension to each tube (each tube will then contain 1×10^6 cells, representing 1 test).
4. To each tube, add 0.5 μ g* of this Ab.
5. Vortex the tubes to ensure thorough mixing of antibody and cells.
6. Incubate the tubes for 30 minutes at 4°C.
7. Wash 2 times at 4°C.
8. Add 100 μ l of secondary antibody (FITC Goat anti-rat IgG (H+L)) at 1/500 dilution.
9. Incubate the tubes at 4°C for 30-60 minutes. (It is recommended that the tubes are protected from light since most fluorochromes are light sensitive).
10. Wash 2 times at 4°C in media B.
11. Resuspend the cell pellet in 50 μ l ice cold media B.
12. Transfer to suitable tubes for flow cytometric analysis containing 15 μ l of propidium iodide at 0.5 mg/ml in PBS. This stains dead cells by intercalating in DNA.

Media:

- A. Phosphate buffered saline (pH 7.2) + 5% normal serum of host species + sodium azide (100 μ l of 2M sodium azide in 100 mls).
- B. Phosphate buffered saline (pH 7.2) + 0.5% Bovine serum albumin + sodium azide (100 μ l of 2M sodium azide in 100 mls).

Results - Tissue Distribution:

Mouse Strain: BALB/c

Cell Concentration: 1×10^6 cells per test

Antibody Concentration Used: 0.5 μ g/ 10^6 cells

Isotypic Control: Rat IgG2a

Results - Strain Distribution:

Cell Concentration: 1×10^6 cells per test

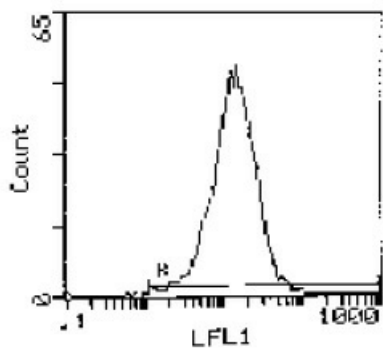
Antibody Concentration Used: 0.5 μ g/ 10^6 cells

Strains Tested: BALB/C, CBA/J, C3H/He, C57BL/6, SWR

Positive: BALB/C, CBA/J, C3H/He, C57BL/6, SWR

Negative: none

Product images:



Cell Source: Spleen
 Percentage of cells stained above control: 99.1%

<u>Cell Source</u>	<u>Percentage of cells stained above control:</u>
Thymus	79.6%
Spleen	99.1%
Lymph Node	81.2%
Bone Marrow	80.2%