

## Product datasheet for **CL009FX**

### Cd8a Mouse Monoclonal Antibody [Clone ID: 49-31.1]

#### Product data:

Product Type:	Primary Antibodies
Clone Name:	49-31.1
Applications:	FC
Recommended Dilution:	Flow Cytometry.
Reactivity:	Mouse
Host:	Mouse
Isotype:	IgG3
Clonality:	Monoclonal
Immunogen:	<b>Immunization:</b> <u>Recipient:</u> 129/ReJ <u>Donor:</u> CBA <b>Fusion Partner:</b> Spleen from immunized recipient fused with Myeloma P3 NSI-Ag 4-1
Specificity:	Anti-mouse Ly-2.1 monoclonal antibody reacts with a sub-population of lymphocytes from mouse strains expressing the Ly 2.1 (CD8a) phenotype, but does not react with lymphocytes from mouse strains expressing the Ly 2.2 phenotype.
Formulation:	PBS containing 0.02% sodium azide (NaN <sub>3</sub> ) as preservative and EIA grade BSA as a stabilizing protein to bring total protein concentration to 4-5 mg/ml. Label: FITC State: Liquid purified Ig fraction Label: Fluorescein isothiocyanate isomer 1
Concentration:	lot specific
Purification:	Affinity chromatography on Protein G
Conjugation:	FITC
Storage:	Store the antibody undiluted at 2-8°C for one month or (in aliquots) at -20°C for longer. Avoid repeated freezing and thawing.
Stability:	Shelf life: one year from despatch.
Gene Name:	CD8 antigen, alpha chain



[View online »](#)

Database Link: [Entrez Gene 12525 Mouse P01731](#)

Synonyms: CD8 alpha chain, CD8A, MAL

Note: Protocol: **FLOW CYTOMETRY ANALYSIS:**

**Method:**

1. Prepare a cell suspension in media A. For cell preparations, deplete the red blood cell population with Lympholyte®-M cell separation medium.
2. Wash 2 times.
3. Resuspend the cells to a concentration of  $2 \times 10^7$  cells/ml in media A. Add 50  $\mu$ l of this suspension to each tube (each tube will then contain  $1 \times 10^6$  cells, representing 1 test).
4. To each tube, add 2.0-1.0  $\mu$ g of this antibody per  $10^6$  cells.
5. Vortex the tubes to ensure thorough mixing of antibody and cells.
6. Incubate the tubes for 30 minutes at 4°C. (It is recommended that the tubes are protected from light, since most fluorochromes are light sensitive.)
7. Wash 2 times at 4°C.
8. Resuspend the cell pellet in 50  $\mu$ l ice cold media B.
9. Transfer to suitable tubes for flow cytometric analysis containing 15  $\mu$ l of propidium iodide at 0.5 mg/ml in PBS. This stains dead cells by intercalating in DNA.

**Media:**

- A. Phosphate buffered saline (pH 7.2) + 5% normal serum of host species + sodium azide (100  $\mu$ l of 2M sodium azide in 100 mls).
- B. Phosphate buffered saline (pH 7.2) + 0.5% Bovine serum albumin + sodium azide (100  $\mu$ l of 2M sodium azide in 100 mls).

**Results:**

Tissue Distribution by Flow Cytometry Analysis:

Mouse Strain: BALB/c

Cell Concentration:  $1 \times 10^6$  cells per test

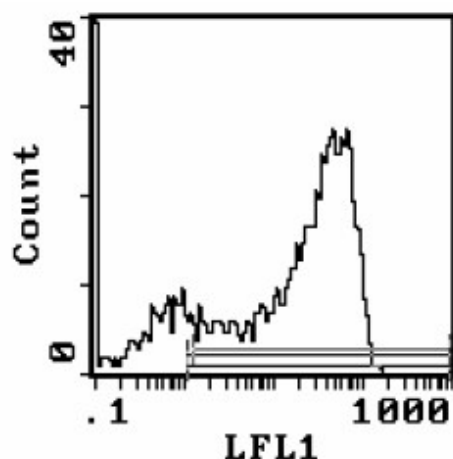
Antibody Concentration Used: 2,0  $\mu$ g/ $10^6$  cells

Isotypic Control: FITC Mouse IgG3

Percentage of cells stained above control:

Thymus 80.7%

Product images:



Strain Distribution by Flow Cytometry Analysis:

Procedure: As above

Antibody Concentration: 0.1  $\mu\text{g}/10^6$  cells

Strains tested:

<u>Strain</u>	<u>Phenotype</u>	<u>+/-</u>
C57BL/6	Ly-2.2	-
CBA/J	Ly-2.1	+
Balb/c	Ly-2.2	-
C3H/He	Ly-2.1	+