

Product datasheet for **CL008BX**

Cd8a Rat Monoclonal Antibody [Clone ID: CT-CD8a]

Product data:

Product Type:	Primary Antibodies
Clone Name:	CT-CD8a
Applications:	FC
Recommended Dilution:	Flow Cytometry Analysis (see Protocols).
Reactivity:	Mouse
Host:	Rat
Isotype:	IgG2a
Clonality:	Monoclonal
Immunogen:	Murine thymocytes
Specificity:	This anti-mouse CD8a antigen monoclonal antibody recognizes the mouse CD8 α chain. The α chain of CD8 associates with the CD8 β chain to form a CD8 α / β heterodimer that is expressed by the majority of thymocytes and by the MHC class I restricted subset of mature T cells ¹ . Mouse CD8 α can also form a CD8 α / α chain homodimer on subsets of CD8 positive T cells. For this reason antibodies specific for CD8a rather than CD8b are recommended for a rigorous delineation of CD8 positive cells.
Formulation:	PBS, 0.1% NaN ₃ and EIA grade BSA as a stabilizing protein to bring total protein concentration to 4-5 mg/ml Label: Biotin State: Liquid purified IgG
Concentration:	lot specific
Purification:	Protein G Chromatography
Conjugation:	Biotin
Storage:	Store the antibody undiluted at 2-8°C for one month or (in aliquots) at -20°C for longer. Avoid repeated freezing and thawing.
Stability:	Shelf life: one year from despatch.
Gene Name:	CD8 antigen, alpha chain
Database Link:	Entrez Gene 12525 Mouse P01731


[View online »](#)

Background: The CD8 antigen is a cell surface glycoprotein found on most cytotoxic T lymphocytes that mediates efficient cell to cell interactions within the immune system. The CD8 antigen, acting as a coreceptor, and the T cell receptor on the T lymphocyte recognize antigen displayed by an antigen presenting cell (APC) in the context of class I MHC molecules. The functional coreceptor is either a homodimer composed of two alpha chains, or a heterodimer composed of one alpha and one beta chain. Both alpha and beta chains share significant homology to immunoglobulin variable light chains.

Synonyms: CD8 alpha chain, CD8A, MAL

Note: Protocol: **FLOW CYTOMETRY ANALYSIS:**

Method:

1. Prepare a cell suspension in media A. For cell preparations, deplete the red blood cell population with Lympholyte®-M cell separation medium.
2. Wash 2 times.
3. Resuspend the cells to a concentration of 2×10^7 cells/ml in media A. Add 50 μ l of this suspension to each tube (each tube will then contain 1×10^6 cells, representing 1 test).
4. To each tube, add $\sim 0.125 \mu\text{g}^*$ of this Ab per 10^6 cells.
5. Vortex the tubes to ensure thorough mixing of antibody and cells.
6. Incubate the tubes for 30 minutes at 4°C .
7. Wash 2 times at 4°C .
8. Add 100 μ l of secondary antibody (Streptavidin-PE) at a 1:5 dilution.
9. Incubate tubes at 4°C for 30 - 60 minutes (It is recommended that tubes are protected from light since most fluorochromes are light sensitive).
10. Wash 2 times at 4°C .
11. Resuspend the cell pellet in 50 μ l ice cold media B.
12. Transfer to suitable tubes for flow cytometric analysis containing 15 μ l of propidium iodide at 0.5 mg/ml in PBS. This stains dead cells by intercalating in DNA.

Media:

- A. Phosphate buffered saline (pH 7.2) + 5% normal serum of host species + sodium azide (100 μ l of 2M sodium azide in 100 mls).
- B. Phosphate buffered saline (pH 7.2) + 0.5% Bovine serum albumin + sodium azide (100 μ l of 2M sodium azide in 100 mls).

Results:

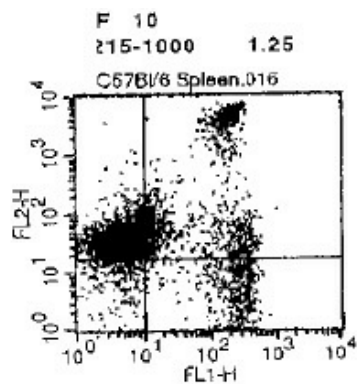
Mouse Strain: BALB/c

Cell Concentration: 1×10^6 cells per test

Antibody Concentration Used: 0.125 $\mu\text{g}/10^6$ cells

Isotypic Control: Biotin Rat IgG2a

Product images:



Representative Dot Plot

Cell Source: Spleen