

Product datasheet for **CL002F**

Cd3e Hamster Monoclonal Antibody [Clone ID: 500-A2]

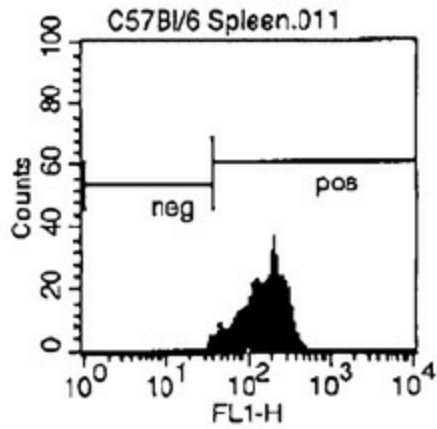
Product data:

Product Type:	Primary Antibodies
Clone Name:	500-A2
Applications:	FC
Recommended Dilution:	FC
Reactivity:	Mouse
Host:	Hamster
Isotype:	IgG
Clonality:	Monoclonal
Immunogen:	C6VL-BS cell lysate
Formulation:	PBS, 0.1% NaN ₃ and EIA grade BSA as stabilizing protien to bring total protein concentration to 4-5 mg/ml
Concentration:	lot specific
Purification:	Liquid purified IgG
Conjugation:	Unconjugated
Storage:	Store the antibody undiluted at 2-8°C for one month or (in aliquots) at -20°C for longer. Avoid repeated freezing and thawing. Shelf life: one year from despatch.
Predicted Protein Size:	21.8 kDa
Gene Name:	CD3 antigen, epsilon polypeptide
Database Link:	NP_031674 Entrez Gene 12501 Mouse P22646
Background:	In the mouse, CD3 is highly expressed by mature T cells and at lower levels by CD4+CD8+ thymocytes ² . The ϵ chain of CD3 is a component of the multimeric T cell receptor complex and is involved with signal transduction
Synonyms:	CD3-epsilon; FLJ18683; T3E; TCRE



[View online »](#)

Product images:



Cell Source: Spleen
Percentage of cells stained above control: 25.5 %