

Product datasheet for **CL002B**

Cd3e Hamster Monoclonal Antibody [Clone ID: 500-A2]

Product data:

Product Type:	Primary Antibodies
Clone Name:	500-A2
Applications:	FC
Recommended Dilution:	FC
Reactivity:	Mouse
Host:	Hamster
Isotype:	IgG
Clonality:	Monoclonal
Formulation:	PBS, 0.1% NaN ₃ and EIA grade BSA as stabilizing protein to bring the total protein concentration to 4-5 mg/ml
Concentration:	lot specific
Purification:	Liquid purified IgG
Conjugation:	Biotin
Storage:	Store the antibody undiluted at 2-8°C for one month or (in aliquots) at -20°C for longer. Avoid repeated freezing and thawing. Shelf life: one year from despatch.
Predicted Protein Size:	~21.8 kDa
Gene Name:	CD3 antigen, epsilon polypeptide
Database Link:	NP_031674 Entrez Gene 12501 Mouse P22646



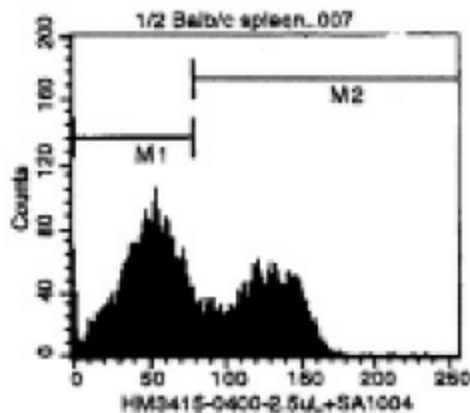
[View online »](#)

Background:

T cell activation through the antigen receptor (TCR) involves the cytoplasmic tails of the CD3 subunits: CD3 gamma, CD3 delta, CD3 epsilon and CD3 zeta. These CD3 subunits are structurally related members of the immunoglobulins super family encoded by closely linked genes on human chromosome 11. The CD3 components have long cytoplasmic tails that associate with cytoplasmic signal transduction molecules. This association is mediated at least in part by a double tyrosine based motif present in a single copy in the CD3 subunits. CD3 may play a role in TCR induced growth arrest, cell survival and proliferation. The CD3 antigen is present on 68-82% of normal peripheral blood lymphocytes, 65-85% of thymocytes and Purkinje cells in the cerebellum. It is never expressed on B or NK cells. Decreased percentages of T lymphocytes may be observed in some autoimmune diseases.

Synonyms:

CD3-epsilon; FLJ18683; T3E; TCRE

Product images:

Cell Source: Spleen Percentage of cells stained above control: 44.1%