

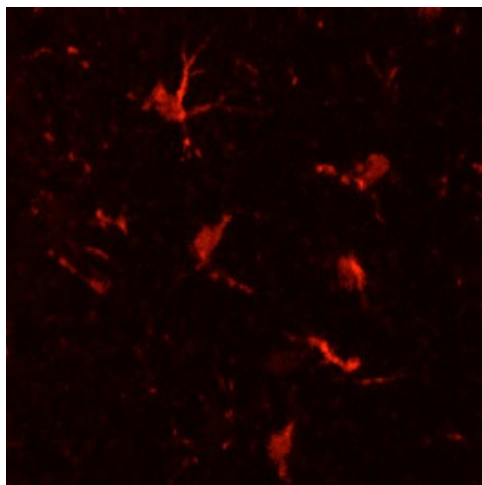
Product datasheet for CH23021-100

CD11b (ITGAM) Chicken Polyclonal Antibody

Product data:

Product Type:	Primary Antibodies
Applications:	IF, IHC, WB
Reactivity:	Human, Mouse
Host:	Chicken
Clonality:	Polyclonal
Formulation:	State: Aff - Purified
Gene Name:	Homo sapiens integrin subunit alpha M (ITGAM), transcript variant 2
Database Link:	Entrez Gene 16409 Mouse Entrez Gene 3684 Human
Synonyms:	ITGAM, CR3A, CR-3 alpha chain, Integrin alpha-M, MAC1
Protein Families:	Druggable Genome, ES Cell Differentiation/IPS, Transmembrane
Protein Pathways:	Cell adhesion molecules (CAMs), Hematopoietic cell lineage, Leukocyte transendothelial migration, Regulation of actin cytoskeleton

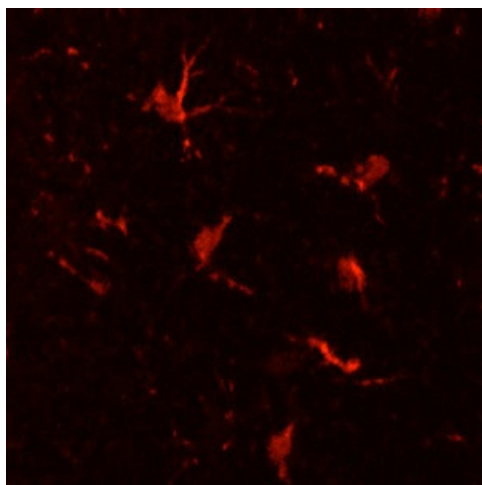
Product images:



CD11b or OX-42 staining of adult mouse cerebral cortex sections showing microglial cells and their processes. Courtesy of Dr. Felix Eckenstein (University of Vermont).



[View online »](#)



CD11b or OX-42 staining of adult mouse cerebral cortex sections showing microglial cells and their processes. Courtesy of Dr. Felix Eckenstein (University of Vermont).