

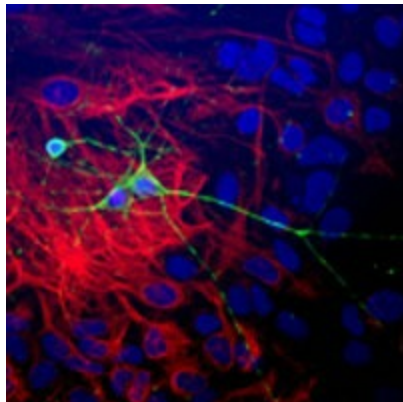
## Product datasheet for **CH23005-100**

### beta III Tubulin (TUBB3) Chicken Polyclonal Antibody

#### Product data:

Product Type:	Primary Antibodies
Applications:	IF, IHC, WB
Reactivity:	Human, Mouse
Host:	Chicken
Clonality:	Polyclonal
Formulation:	State: Aff - Purified
Gene Name:	tubulin beta 3 class III
Database Link:	<a href="#">Entrez Gene 10381 Human</a>
Synonyms:	Tubulin beta-3 chain, Tubulin beta-III, Tubulin beta-4

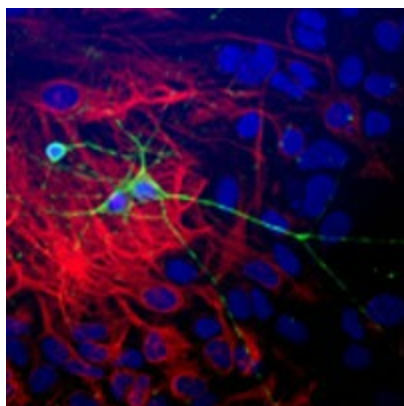
#### Product images:



Dissociated cell culture of a neonatal mouse brain showing  $\beta$ -Tubulin 3 (green staining) of neurons. These cultures were counter-stained with a rabbit anti-GFAP antibody (red staining) to identify astrocytes, and with DAPI (blue staining) to localize nuclei.



[View online »](#)



Dissociated cell culture of a neonatal mouse brain showing  $\beta$ -Tubulin 3 (green staining) of neurons. These cultures were counter-stained with a rabbit anti-GFAP antibody (red staining) to identify astrocytes, and with DAPI (blue staining) to localize nuclei.