

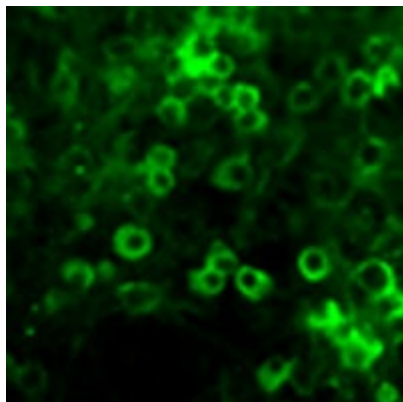
## Product datasheet for CH23003-100

### NSE (ENO2) Chicken Polyclonal Antibody

#### Product data:

Product Type:	Primary Antibodies
Applications:	IF, IHC, WB
Reactivity:	Human, Mouse
Host:	Chicken
Clonality:	Polyclonal
Formulation:	State: Aff - Purified
Gene Name:	enolase 2
Database Link:	<a href="#">Entrez Gene 2026 Human</a>
Synonyms:	NSE, ENO2, Enolase 2, Neural enolase, Gamma-enolase

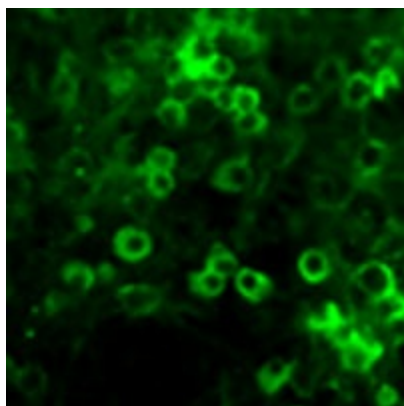
#### Product images:



Dissociated cell cultures of neonatal mouse brains, showing NSE (green staining) in neurons. These cultures were counter-stained with a rabbit anti-GFAP to localize astrocytes, as well as with DAPI (blue staining) to localize nuclei.



[View online »](#)



Dissociated cell cultures of neonatal mouse brains, showing NSE (green staining) in neurons. These cultures were counter-stained with a rabbit anti-GFAP to localize astrocytes, as well as with DAPI (blue staining) to localize nuclei.