

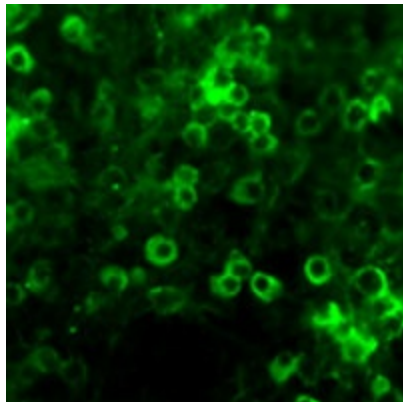
## Product datasheet for CH23002-100

### Netrin 1 (NTN1) Chicken Polyclonal Antibody

#### Product data:

Product Type:	Primary Antibodies
Applications:	IF, IHC, WB
Reactivity:	Human, Mouse
Host:	Chicken
Clonality:	Polyclonal
Formulation:	State: Aff - Purified
Gene Name:	netrin 1
Database Link:	<a href="#">Entrez Gene 9423 Human</a>
Synonyms:	NTN1, NTN1L

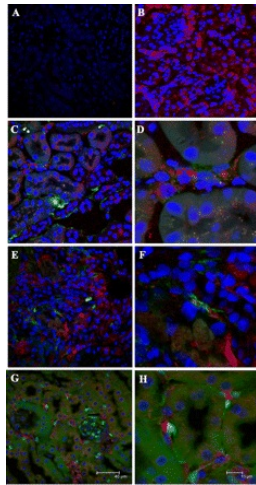
#### Product images:



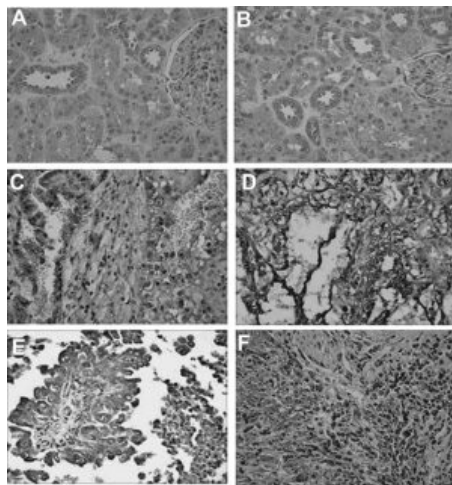
Dissociated cell cultures of an e13 mouse brain showing Netrin-1 (green staining) in neuronal precursor cells.



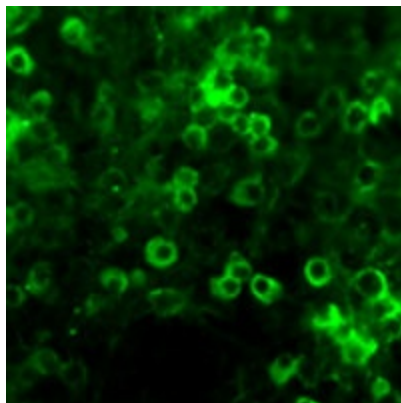
[View online »](#)



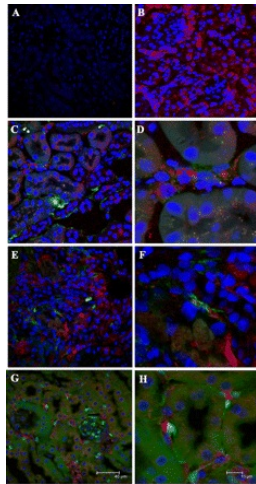
Immunohistochemical colocalization of netrin-1 and endothelial markers. Paraformaldehyde-fixed frozen tissue sections were stained with anti-netrin-1 antibody (red stain) and anti-Von Willebrand Factor (VWF) antibody (green stain) as described in MATERIALS AND METHODS. Nuclei were stained blue with DAPI. In sham-operated kidney (B–D), netrin-1 staining was mainly in the interstitium and colocalized with VWF. Similarly, netrin-1 and VWF colocalized in the kidney section from 72 h of reperfusion (E and F). No staining was seen in the primary antibody negative control (A). Colocalization of netrin-1 (red) and GFP (green) in kidney from Tie2-GFP mice was also observed under normal conditions (G and H). doi:10.1152/ajprenal.00508.2007.



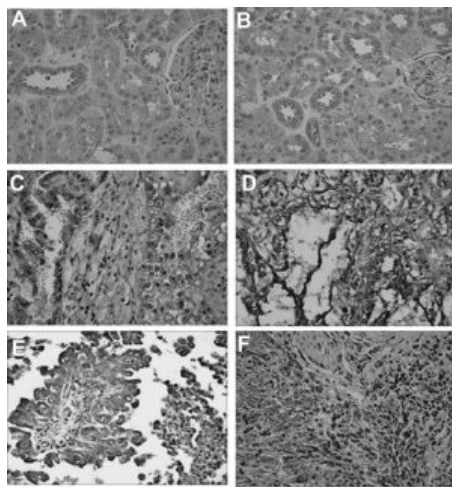
Immunohistochemical localization of netrin-1 in renal cell carcinoma (RCC) tissues. A. Secondary antibody control showing no staining. B. Normal adjacent tissues do not show any staining for netrin-1. C. Stage I RCC shows staining for netrin-1. D. Stage II RCC shows staining for netrin-1. E&F. doi: 10.3109/1354750X.2010.541564



Dissociated cell cultures of an e13 mouse brain showing Netrin-1 (green staining) in neuronal precursor cells.



Immunohistochemical colocalization of netrin-1 and endothelial markers. Paraformaldehyde-fixed frozen tissue sections were stained with anti-netrin-1 antibody (red stain) and anti-Von Willebrand Factor (VWF) antibody (green stain) as described in MATERIALS AND METHODS. Nuclei were stained blue with DAPI. In sham-operated kidney (B–D), netrin-1 staining was mainly in the interstitium and colocalized with VWF. Similarly, netrin-1 and VWF colocalized in the kidney section from 72 h of reperfusion (E and F). No staining was seen in the primary antibody negative control (A). Colocalization of netrin-1 (red) and GFP (green) in kidney from Tie2-GFP mice was also observed under normal conditions (G and H). doi:10.1152/ajprenal.00508.2007.



Immunohistochemical localization of netrin-1 in renal cell carcinoma (RCC) tissues. A. Secondary antibody control showing no staining. B. Normal adjacent tissues do not show any staining for netrin-1. C. Stage I RCC shows staining for netrin-1. D. Stage II RCC shows staining for netrin-1. E&F. doi: 10.3109/1354750X.2010.541564