

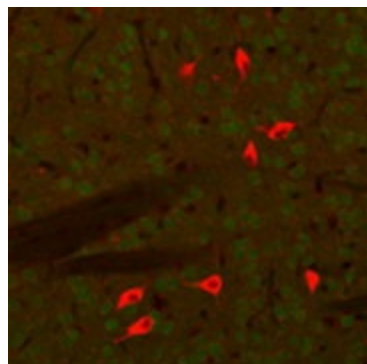
## Product datasheet for CH23000-100

### Choline Acetyltransferase (CHAT) Chicken Polyclonal Antibody

#### Product data:

Product Type:	Primary Antibodies
Applications:	IF, IHC, WB
Reactivity:	Human, Mouse
Host:	Chicken
Clonality:	Polyclonal
Formulation:	State: Aff - Purified
Gene Name:	Homo sapiens choline O-acetyltransferase (CHAT), transcript variant M
Database Link:	<a href="#">Entrez Gene 12647 Mouse</a> <a href="#">Entrez Gene 1103 Human</a>
Synonyms:	Choline O-acetyltransferase, Choline acetylase, CHOACTase, ChAT, EC=2.3.1.6
Protein Families:	Druggable Genome
Protein Pathways:	Glycerophospholipid metabolism

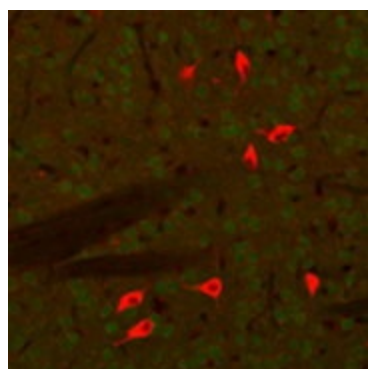
#### Product images:



A tissue section through an adult mouse brain showing ChAT (red staining) in cholinergic neurons of the caudate-putamen nucleus.



[View online »](#)



A tissue section through an adult mouse brain showing ChAT (red staining) in cholinergic neurons of the caudate-putamen nucleus.