

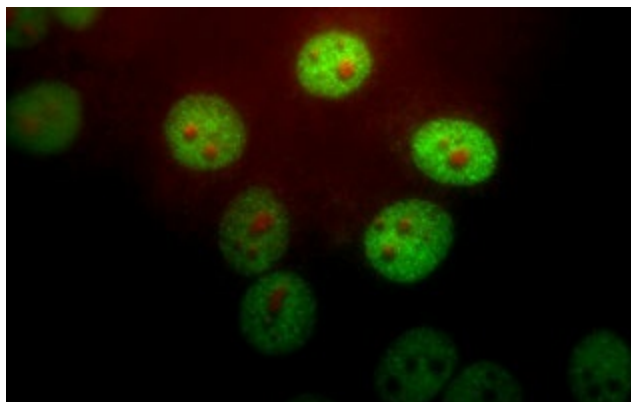
## Product datasheet for CH22110-100

### PIN1 Chicken Polyclonal Antibody

#### Product data:

Product Type:	Primary Antibodies
Applications:	IF, WB
Reactivity:	Human
Host:	Chicken
Isotype:	Ig
Clonality:	Polyclonal
Formulation:	State: Serum
Gene Name:	Homo sapiens peptidylprolyl cis/trans isomerase, NIMA-interacting 1 (PIN1), transcript variant 1
Database Link:	<a href="#">Entrez Gene 5300 Human</a>
Synonyms:	PIN-1
Protein Families:	Druggable Genome
Protein Pathways:	RIG-I-like receptor signaling pathway

#### Product images:



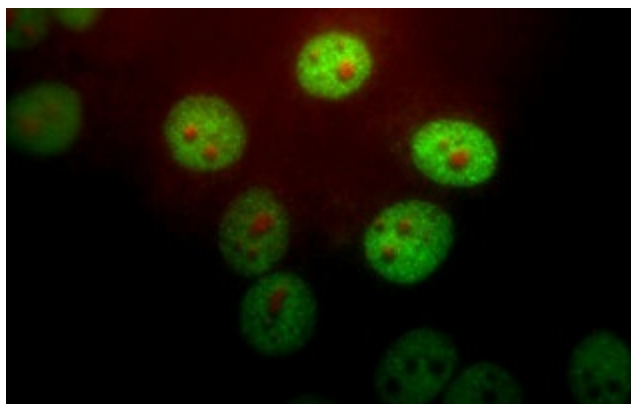
HeLa cells stained with Pin-1 (1:1,000 dilution, green) and fibrillar antibody (red). Pin-1 stains the nuclear matrix and, much more faintly, the cytoplasm. The fibrillar antibody marks nucleoli.



[View online »](#)



Western blot of whole HeLa cell homogenate stained with Pin1, at dilution of 1:10,000. A prominent band running with an apparent SDS-PAGE molecular weight of ~21kDa corresponds to Pin1.



HeLa cells stained with Pin-1 (1:1,000 dilution, green) and fibrillarin (red). Pin-1 stains the nuclear matrix and, much more faintly, the cytoplasm. The fibrillarin antibody marks nucleoli.



Western blot of whole HeLa cell homogenate stained with Pin1, at dilution of 1:10,000. A prominent band running with an apparent SDS-PAGE molecular weight of ~21kDa corresponds to Pin1.