

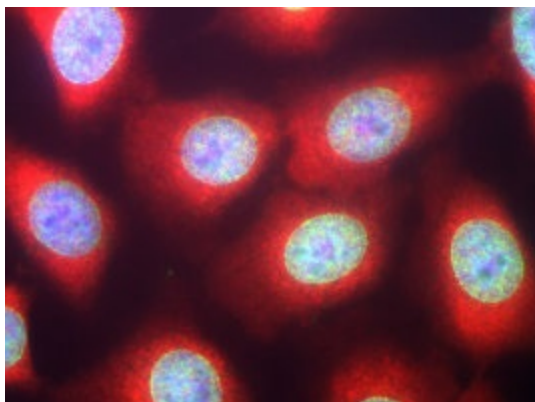
Product datasheet for CH22109-100

Casein Kinase 1 alpha (CSNK1A1) Chicken Polyclonal Antibody

Product data:

Product Type:	Primary Antibodies
Applications:	IF, WB
Reactivity:	Human
Host:	Chicken
Isotype:	Ig
Clonality:	Polyclonal
Formulation:	State: Liquid
Gene Name:	Homo sapiens casein kinase 1 alpha 1 (CSNK1A1), transcript variant 2
Database Link:	Entrez Gene 1452 Human
Synonyms:	Casein kinase I alpha, CKI-alpha, CK1
Protein Families:	Druggable Genome, ES Cell Differentiation/IPS, Protein Kinase
Protein Pathways:	Hedgehog signaling pathway, Wnt signaling pathway

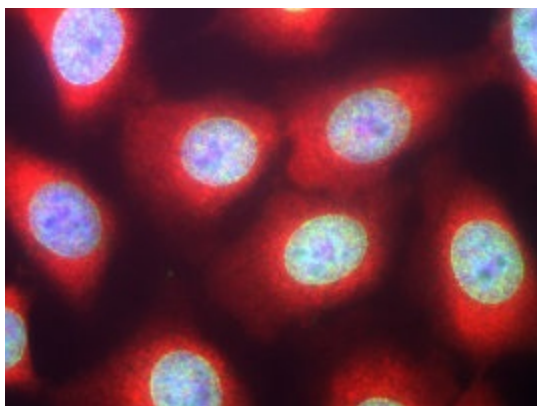
Product images:



HeLa cells stained with chicken casein kinase 1 alpha antibody (red) and our panspecific mouse monoclonal antibody to nuclear pore complexes 39C7-a Panspecific Nuclear Pore Complex Marker. Casein kinase 1 alpha has a particulate distribution both in the nucleus and the cytoplasm. Blue is the Hoeschst DNA stain.



[View online »](#)



HeLa cells stained with chicken casein kinase 1 alpha antibody (red) and our panspecific mouse monoclonal antibody to nuclear pore complexes 39C7-a Panspecific Nuclear Pore Complex Marker. Casein kinase 1 alpha has a particulate distribution both in the nucleus and the cytoplasm. Blue is the Hoeschst DNA stain.