

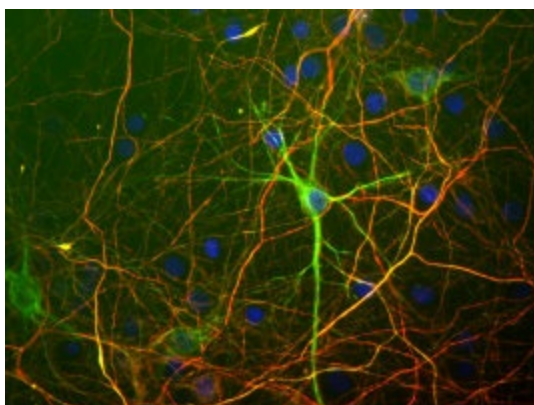
Product datasheet for CH22104-50

NFH (NEFH) Chicken Polyclonal Antibody

Product data:

Product Type:	Primary Antibodies
Applications:	IF, IHC, WB
Reactivity:	Human, Mouse, Primate, Rat
Host:	Chicken
Clonality:	Polyclonal
Formulation:	State: Serum
Gene Name:	neurofilament, heavy polypeptide
Database Link:	Entrez Gene 4744 Human
Synonyms:	NEFH,NF-H,KIAA0845, NFH, 200 kDa neurofilament protein, Neurofilament triplet H protein, (Neuronal Marker), heavy polypeptide

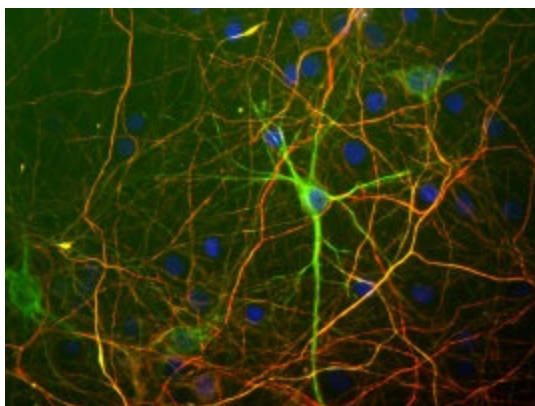
Product images:



Shows rat mixed neuron/glia cultures stained with mouse monoclonal antibody to neurofilament subunit NF-L clone 7D1 (green) and chicken antibody to neurofilament NF-H. This antibody binds primarily to the phosphorylated axonal forms of NF-H, in contrast to the NF-L antibody which stains both axonal and dendritic/perikaryal neurofilaments. The NF-L antibody therefore reveals a prominent cell body in green, while the surrounding axonal profiles are orange, since they are bound by both NF-L and the chicken NF-H antibody. Blue is a DNA stain. Protocol on data sheet.



[View online »](#)



Shows rat mixed neuron/glia cultures stained with mouse monoclonal antibody to neurofilament subunit NF-L clone 7D1 (green) and chicken antibody to neurofilament NF-H. This antibody binds primarily to the phosphorylated axonal forms of NF-H, in contrast to the NF-L antibody which stains both axonal and dendritic/perikaryal neurofilaments. The NF-L antibody therefore reveals a prominent cell body in green, while the surrounding axonal profiles are orange, since they are bound by both NF-L and the chicken NF-H antibody. Blue is a DNA stain. Protocol on data sheet.