

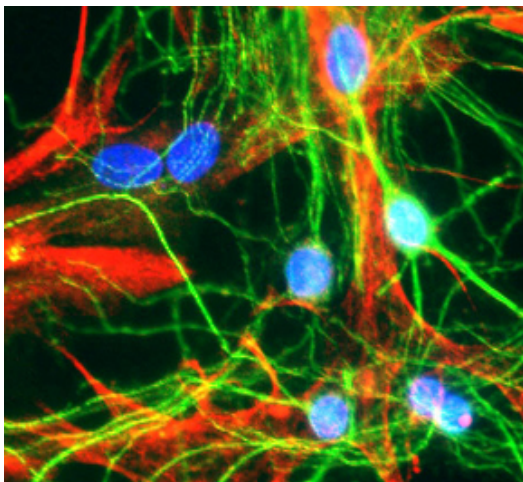
Product datasheet for CH22103-50

MAP2 Chicken Polyclonal Antibody

Product data:

Product Type:	Primary Antibodies
Applications:	IF, IHC, WB
Reactivity:	Human, Mouse, Primate, Rat
Host:	Chicken
Clonality:	Polyclonal
Formulation:	State: Serum
Gene Name:	microtubule associated protein 2
Database Link:	Entrez Gene 4133 Human
Synonyms:	Microtubule-associated protein 2, MAP2, Neuronal Marker

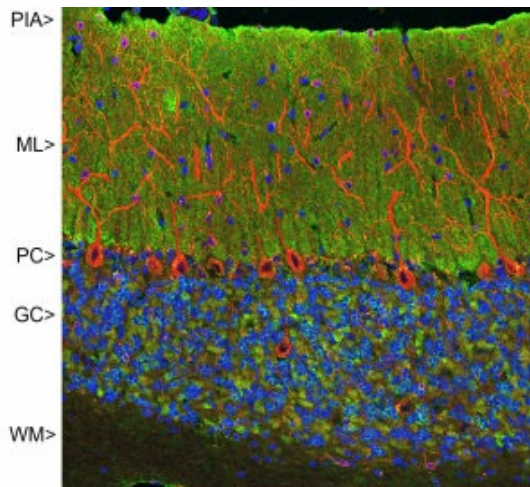
Product images:



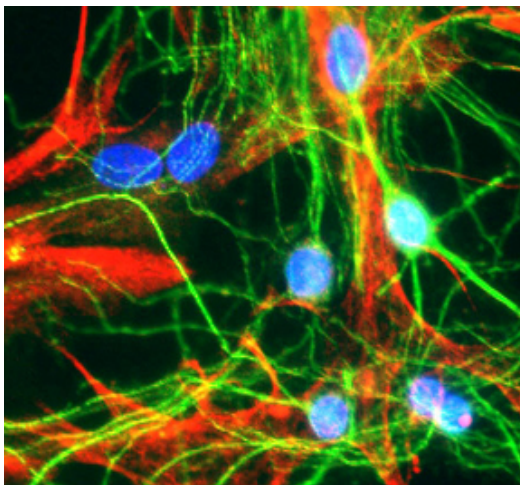
of primary neuronal culture showing neuronal staining with MAP2 (green; Catalog # [CH22103]) and astrocytes with GFAP (red; Catalog # [MO19063]). Nuclei are counterstained blue.



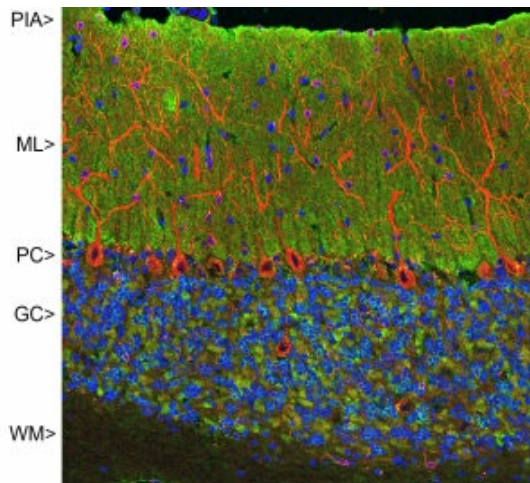
[View online »](#)



Confocal image of adult rat cerebellar cortex stained with VSNL1 (green) and chicken polyclonal antibody to MAP2 (red) and DNA (blue). VSNL1 antibody reveals synapses in the molecular layer (ML) strongly. Synaptic regions are also seen in the granule cell layer (GC). The perikarya of Purkinje cells (PC) are revealed with the MAP2 antibody (4). Little staining is seen in the white matter (WM).



of primary neuronal culture showing neuronal staining with MAP2 (green; Catalog # [CH22103]) and astrocytes with GFAP (red; Catalog # [MO19063]). Nuclei are counterstained blue.



Confocal image of adult rat cerebellar cortex stained with VSNL1 (green) and chicken polyclonal antibody to MAP2 (red) and DNA (blue). VSNL1 antibody reveals synapses in the molecular layer (ML) strongly. Synaptic regions are also seen in the granule cell layer (GC). The perikarya of Purkinje cells (PC) are revealed with the MAP2 antibody (4). Little staining is seen in the white matter (WM).