

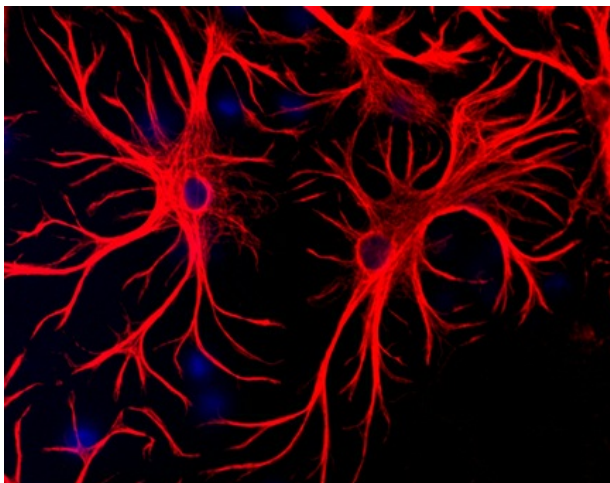
Product datasheet for CH22102-100

GFAP Chicken Polyclonal Antibody

Product data:

Product Type:	Primary Antibodies
Applications:	IF, IHC, WB
Reactivity:	Feline, Human, Mouse, Primate, Rat
Host:	Chicken
Clonality:	Polyclonal
Formulation:	State: Serum
Gene Name:	Homo sapiens glial fibrillary acidic protein (GFAP), transcript variant 2
Database Link:	Entrez Gene 14580 MouseEntrez Gene 24387 RatEntrez Gene 2670 Human
Synonyms:	Glial Fibrillary Acidic Protein
Protein Families:	ES Cell Differentiation/IPS

Product images:



of GFAP (red) staining of astrocytes in primary culture (DAPI, blue).

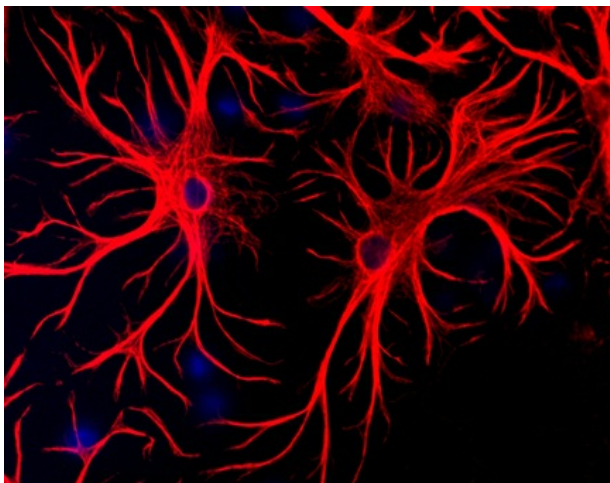


[View online »](#)

GFAP >



Western blot of whole rat cerebellum homogenate stained with CPCA-GFAP, at dilution of 1:100,000. A prominent band running with an apparent SDS-PAGE molecular weight of ~50kDa corresponds to rodent GFAP. A lower band at ~45kDa is derived from the GFAP molecule.



of GFAP (red) staining of astrocytes in primary culture (DAPI, blue).

GFAP >



Western blot of whole rat cerebellum homogenate stained with CPCA-GFAP, at dilution of 1:100,000. A prominent band running with an apparent SDS-PAGE molecular weight of ~50kDa corresponds to rodent GFAP. A lower band at ~45kDa is derived from the GFAP molecule.