

## Product datasheet for **CF816375**

### CD20 (MS4A1) Mouse Monoclonal Antibody [Clone ID: OTIIB12]

#### Product data:

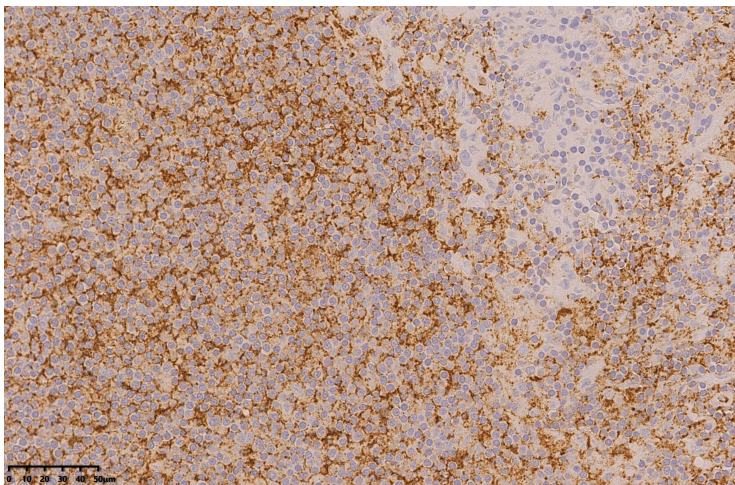
<b>Product Type:</b>	Primary Antibodies
<b>Clone Name:</b>	OTIIB12
<b>Applications:</b>	IHC
<b>Recommended Dilution:</b>	IHC 1:7500
<b>Reactivity:</b>	Human
<b>Host:</b>	Mouse
<b>Isotype:</b>	IgG2b
<b>Clonality:</b>	Monoclonal
<b>Immunogen:</b>	Human recombinant protein fragment of Human CD20 (MS4A1) (NM_021950) produced in Ecoli.
<b>Reconstitution Method:</b>	For reconstitution, we recommend adding 100uL distilled water to a final antibody concentration of about 1 mg/mL. To use this carrier-free antibody for conjugation experiment, we strongly recommend performing another round of desalting process. (OriGene recommends Zeba Spin Desalting Columns, 7KMWCO from Thermo Scientific)
<b>Concentration:</b>	1 mg/ml
<b>Purification:</b>	Purified from mouse ascites fluids or cell culture supernatant by affinity chromatography (protein A/G)
<b>Conjugation:</b>	Unconjugated
<b>Storage:</b>	Shipped at -20°C or with ice packs, Upon delivery store at -20°C. Dilute in PBS(pH7.3) if necessary. Stable for 12 months from date of receipt. Avoid repeated freeze-thaws.
<b>Stability:</b>	Stable for 12 months from date of receipt.
<b>Predicted Protein Size:</b>	33.1 kDa
<b>Gene Name:</b>	membrane spanning 4-domains A1



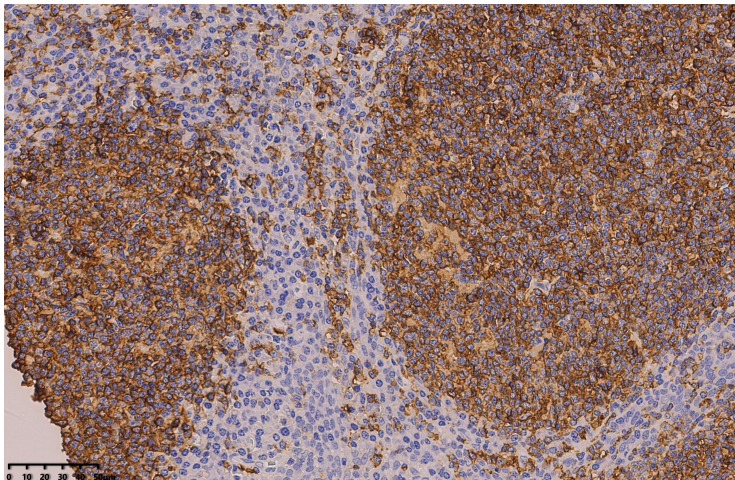
**Database Link:** [Entrez Gene 931 Human P11836](#)

**Background:** This gene encodes a member of the membrane-spanning 4A gene family. Members of this nascent protein family are characterized by common structural features and similar intron/exon splice boundaries and display unique expression patterns among hematopoietic cells and nonlymphoid tissues. This gene encodes a B-lymphocyte surface molecule which plays a role in the development and differentiation of B-cells into plasma cells. This family member is localized to 11q12, among a cluster of family members. Alternative splicing of this gene results in two transcript variants which encode the same protein. [provided by RefSeq, Jul 2008]

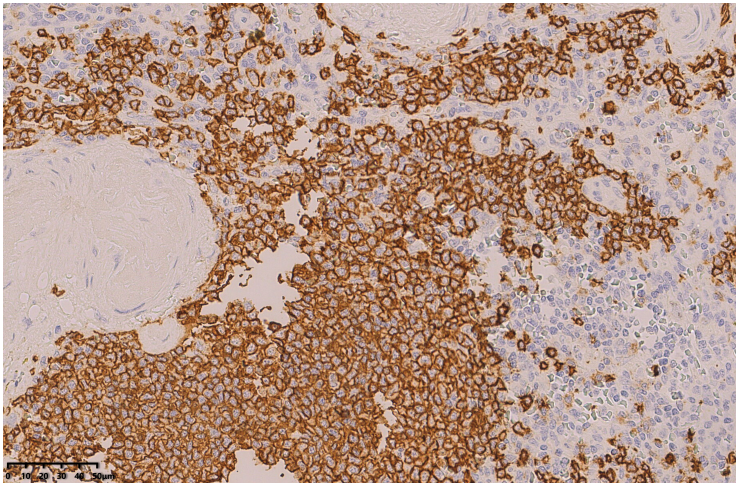
**Product images:**



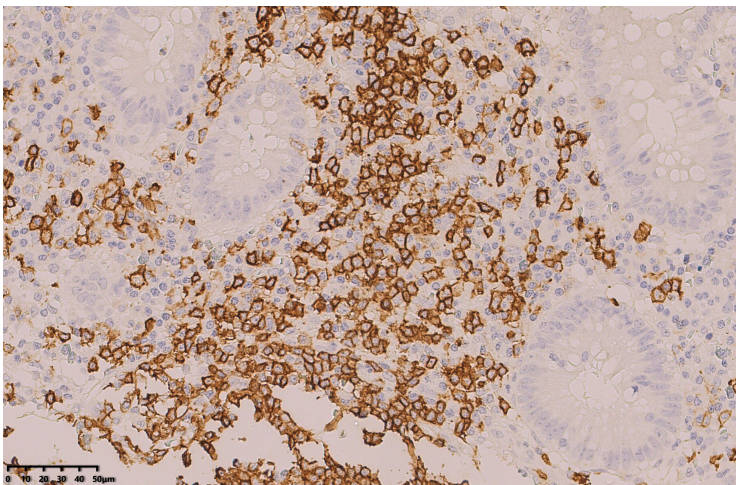
Immunohistochemical staining of paraffin-embedded B-lymphoma using anti-CD20 mouse monoclonal antibody. (Heat-induced epitope retrieval by 1mM EDTA in 10mM Tris buffer (pH9.0) at 120°C for 3 min, [TA816375])



Immunohistochemical staining of paraffin-embedded Tonsil using anti-CD20 mouse monoclonal antibody. (Heat-induced epitope retrieval by 1mM EDTA in 10mM Tris buffer (pH9.0) at 120°C for 3 min, [TA816375])



Immunohistochemical staining of paraffin-embedded Spleen using anti-CD20 mouse monoclonal antibody.(Heat-induced epitope retrieval by 1mM EDTA in 10mM Tris buffer (pH9.0) at 120°C for 3 min, [TA816375])



Immunohistochemical staining of paraffin-embedded Appendix using anti-CD20 mouse monoclonal antibody.(Heat-induced epitope retrieval by 1mM EDTA in 10mM Tris buffer (pH9.0) at 120°C for 3 min, [TA816375])