

Product datasheet for **CF816106**

HTRA1 Mouse Monoclonal Antibody [Clone ID: OTI2F12]

Product data:

Product Type:	Primary Antibodies
Clone Name:	OTI2F12
Applications:	WB
Recommended Dilution:	WB1:500
Reactivity:	Human
Host:	Mouse
Isotype:	IgG2a
Clonality:	Monoclonal
Immunogen:	Human recombinant protein fragment of Human HTRA1 (NP_002766) produced in Ecoli.
Reconstitution Method:	For reconstitution, we recommend adding 100uL distilled water to a final antibody concentration of about 1 mg/mL. To use this carrier-free antibody for conjugation experiment, we strongly recommend performing another round of desalting process. (OriGene recommends Zeba Spin Desalting Columns, 7KMWCO from Thermo Scientific)
Purification:	Purified from mouse ascites fluids or tissue culture supernatant by affinity chromatography (protein A/G)
Conjugation:	Unconjugated
Storage:	Shipped at -20°C or with ice packs, Upon delivery store at -20°C. Dilute in PBS(pH7.3) if necessary. Stable for 12 months from date of receipt. Avoid repeated freeze-thaws.
Stability:	Stable for 12 months from date of receipt
Predicted Protein Size:	51.3KD
Gene Name:	HtrA serine peptidase 1
Database Link:	Entrez Gene 5654 Human Q92743
Background:	This gene encodes a member of the trypsin family of serine proteases. This protein is a secreted enzyme that is proposed to regulate the availability of insulin-like growth factors (IGFs) by cleaving IGF-binding proteins. It has also been suggested to be a regulator of cell growth. Variations in the promoter region of this gene are the cause of susceptibility to age-related macular degeneration type 7. [provided by RefSeq, Jul 2008]

[View online »](#)

Product images:

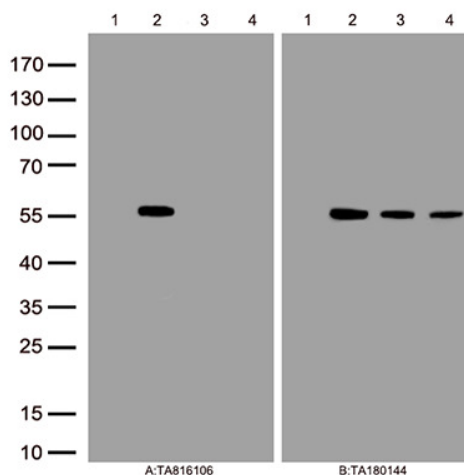


Figure A, Western blot analysis of overexpressed lysates(15ug per lane) from HEK293T cells transfected with empty plasmid ([PS100001], lane 1) , human HTRA1 plasmid ([RC222362], lane 2), mouse HTRA1 plasmid ([MR207695], lane 3), rat HTRA1 plasmid ([RR208298], lane 4)using anti-HTRA1 antibody [TA816106] (1:500). Figure B, Western blot analysis of the same samples as figure A with anti-DDK antibody ([TA180144], 1:1000)