

## Product datasheet for CF815852

### Inhibin beta E chain (INHBE) Mouse Monoclonal Antibody [Clone ID: OTI14B5]

#### Product data:

Product Type:	Primary Antibodies
Clone Name:	OTI14B5
Applications:	WB
Recommended Dilution:	WB 1:500
Reactivity:	Human
Host:	Mouse
Isotype:	IgG1
Clonality:	Monoclonal
Immunogen:	Human recombinant protein fragment of Human INHBE (NP_113667) produced in Ecoli.
Reconstitution Method:	For reconstitution, we recommend adding 100uL distilled water to a final antibody concentration of about 1 mg/mL. To use this carrier-free antibody for conjugation experiment, we strongly recommend performing another round of desalting process. (OriGene recommends Zeba Spin Desalting Columns, 7KMWCO from Thermo Scientific)
Purification:	Purified from mouse ascites fluids or tissue culture supernatant by affinity chromatography (protein A/G)
Conjugation:	Unconjugated
Storage:	Shipped at -20°C or with ice packs, Upon delivery store at -20°C. Dilute in PBS(pH7.3) if necessary. Stable for 12 months from date of receipt. Avoid repeated freeze-thaws.
Stability:	1 Year
Predicted Protein Size:	38.6kDa
Gene Name:	inhibin subunit beta E
Database Link:	<a href="#">Entrez Gene 83729 Human P58166</a>


[View online »](#)

## Background:

This gene encodes a member of the TGF-beta (transforming growth factor-beta) superfamily of proteins. The encoded preproprotein is proteolytically processed to generate an inhibin beta subunit. Inhibins have been implicated in regulating numerous cellular processes including cell proliferation, apoptosis, immune response and hormone secretion. This gene may be upregulated under conditions of endoplasmic reticulum stress, and this protein may inhibit cellular proliferation and growth in pancreas and liver. [provided by RefSeq, Sep 2016]

## Product images:

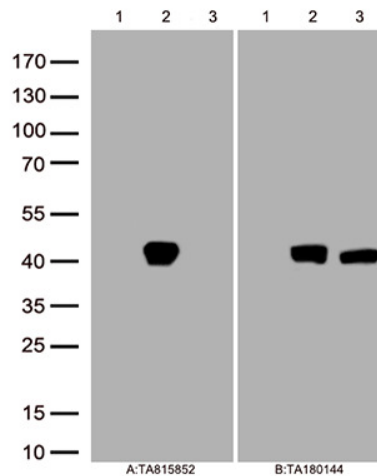
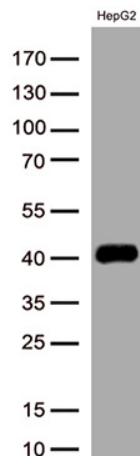


Figure A, Western blot analysis of overexpressed lysates (25ug per lane) from HEK293T cells transfected with empty plasmid ([PS100001], lane 1), human INHBE plasmid ([RC201426], lane 2), mouse INHBE plasmid ([MR205316], lane 3) using anti-INHBE antibody [TA815852] (1:500). Figure B, Western blot analysis of the same samples as figure A with anti-DDK antibody ([TA180144], 1:1000).



Western blot analysis of extracts (50ug per lane) from HepG2 lysates by using anti-INHBE monoclonal antibody ([TA815852], 1:500).