

Product datasheet for **CF815677**

PLA2R (PLA2R1) Mouse Monoclonal Antibody [Clone ID: OTI13F2]

Product data:

Product Type:	Primary Antibodies
Clone Name:	OTI13F2
Applications:	WB
Recommended Dilution:	WB 1:500
Reactivity:	Human, Mouse
Host:	Mouse
Isotype:	IgG1
Clonality:	Monoclonal
Immunogen:	Human recombinant protein fragment of Human PLA2R1 (NP_001007268) produced in Ecoli.
Formulation:	Lyophilized powder (original buffer 1X PBS, pH 7.3, 8% trehalose)
Reconstitution Method:	For reconstitution, we recommend adding 100uL distilled water to a final antibody concentration of about 1 mg/mL. To use this carrier-free antibody for conjugation experiment, we strongly recommend performing another round of desalting process. (OriGene recommends Zeba Spin Desalting Columns, 7KMWCO from Thermo Scientific)
Purification:	Purified from mouse ascites fluids or tissue culture supernatant by affinity chromatography (protein A/G)
Conjugation:	Unconjugated
Storage:	Shipped at -20°C or with ice packs, Upon delivery store at -20°C. Dilute in PBS(pH7.3) if necessary. Stable for 12 months from date of receipt. Avoid repeated freeze-thaws.
Stability:	Stable for 12 months from date of receipt.
Predicted Protein Size:	152.81KD
Gene Name:	phospholipase A2 receptor 1
Database Link:	NP_001007268 Entrez Gene 22925 Human Q13018



[View online »](#)

Background:

This gene represents a phospholipase A2 receptor. The encoded protein likely exists as both a transmembrane form and a soluble form. The transmembrane receptor may play a role in clearance of phospholipase A2, thereby inhibiting its action. Polymorphisms at this locus have been associated with susceptibility to idiopathic membranous nephropathy. Alternatively spliced transcript variants encoding different isoforms have been identified.[provided by RefSeq, Sep 2010]

Synonyms:

CLEC13C; PLA2-R; PLA2G1R; PLA2IR; PLA2R

Protein Families:

Druggable Genome, Transmembrane

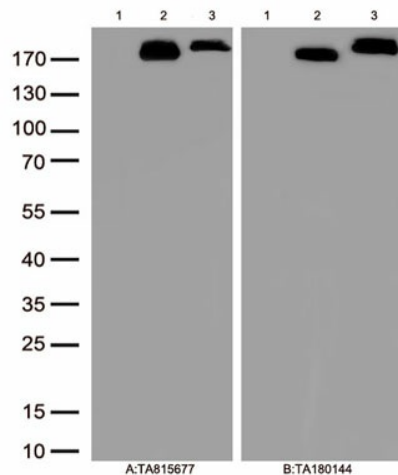
Product images:


Figure A, Western blot analysis of overexpressed lysates(15ug per lane) from HEK293T cells transfected with empty plasmid ([PS100001], lane 1) , human PLA2R1 plasmid ([RC213576], lane 2), mouse PLA2R1 plasmid ([MR220670], lane 3)using anti-PLA2R1 antibody [TA815677] (1:500). Figure B, Western blot analysis of the same samples as figure A with anti-DDK antibody ([TA180144], 1:1000)