

## Product datasheet for **CF815410**

### **SIGLEC15 Mouse Monoclonal Antibody [Clone ID: OTI11G6]**

#### **Product data:**

<b>Product Type:</b>	Primary Antibodies
<b>Clone Name:</b>	OTI11G6
<b>Applications:</b>	WB
<b>Recommended Dilution:</b>	WB 1:500
<b>Reactivity:</b>	Human
<b>Host:</b>	Mouse
<b>Isotype:</b>	IgG1
<b>Clonality:</b>	Monoclonal
<b>Immunogen:</b>	Human recombinant protein fragment of human SIGLEC15 (NP_998767 ) produced in Expi 293F.
<b>Formulation:</b>	Lyophilized powder (original buffer 1X PBS, pH 7.3, 8% trehalose)
<b>Reconstitution Method:</b>	For reconstitution, we recommend adding 100uL distilled water to a final antibody concentration of about 1 mg/mL. To use this carrier-free antibody for conjugation experiment, we strongly recommend performing another round of desalting process. (OriGene recommends Zeba Spin Desalting Columns, 7KMWCO from Thermo Scientific)
<b>Purification:</b>	Purified from mouse ascites fluids or tissue culture supernatant by affinity chromatography (protein A/G)
<b>Conjugation:</b>	Unconjugated
<b>Storage:</b>	Shipped at -20°C or with ice packs, Upon delivery store at -20°C. Dilute in PBS(pH7.3) if necessary. Stable for 12 months from date of receipt. Avoid repeated freeze-thaws.
<b>Stability:</b>	Stable for 12 months from date of receipt.
<b>Predicted Protein Size:</b>	35.5 kDa
<b>Gene Name:</b>	sialic acid binding Ig like lectin 15
<b>Database Link:</b>	<a href="#">NP_998767</a> <a href="#">Entrez Gene 284266 Human</a> <a href="#">Q6ZMC9</a>
<b>Background:</b>	Binds sialylated glycoproteins.[UniProtKB/Swiss-Prot Function]

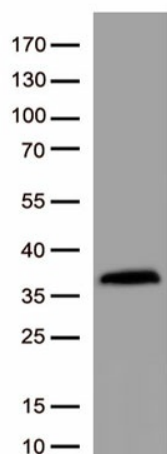


[View online »](#)

Synonyms: CD33L3; HsT1361; SIGLEC-15

Protein Families: Transmembrane

### Product images:



Western blot analysis of recombinant SIGLEC15 protein (0.02ug) by using SIGLEC15 Mouse Monoclonal Antibody ([TA815410], 1:500).