

Product datasheet for **CF815396**

SIGLEC15 Mouse Monoclonal Antibody [Clone ID: OTI1B1]

Product data:

Product Type:	Primary Antibodies
Clone Name:	OTI1B1
Applications:	WB
Recommended Dilution:	WB 1:500
Reactivity:	Human
Host:	Mouse
Isotype:	IgG1
Clonality:	Monoclonal
Immunogen:	Human recombinant protein fragment of human SIGLEC15 (NP_998767) produced in Expi 293F.
Formulation:	Lyophilized powder (original buffer 1X PBS, pH 7.3, 8% trehalose)
Reconstitution Method:	For reconstitution, we recommend adding 100uL distilled water to a final antibody concentration of about 1 mg/mL. To use this carrier-free antibody for conjugation experiment, we strongly recommend performing another round of desalting process. (OriGene recommends Zeba Spin Desalting Columns, 7KMWCO from Thermo Scientific)
Purification:	Purified from mouse ascites fluids or tissue culture supernatant by affinity chromatography (protein A/G)
Conjugation:	Unconjugated
Storage:	Shipped at -20°C or with ice packs, Upon delivery store at -20°C. Dilute in PBS(pH7.3) if necessary. Stable for 12 months from date of receipt. Avoid repeated freeze-thaws.
Stability:	Stable for 12 months from date of receipt.
Predicted Protein Size:	35.5 kDa
Gene Name:	sialic acid binding Ig like lectin 15
Database Link:	NP_998767 Entrez Gene 284266 Human Q6ZMC9
Background:	Binds sialylated glycoproteins.[UniProtKB/Swiss-Prot Function]

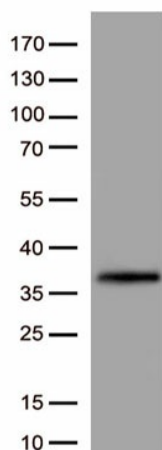


[View online »](#)

Synonyms: CD33L3; HsT1361; SIGLEC-15

Protein Families: Transmembrane

Product images:



Western blot analysis of recombinant SIGLEC15 protein (0.02ug) by using SIGLEC15 Mouse Monoclonal Antibody ([TA815396], 1:500).