

Product datasheet for **CF815302**

Caldesmon (CALD1) Mouse Monoclonal Antibody [Clone ID: OTI3E8]

Product data:

Product Type:	Primary Antibodies
Clone Name:	OTI3E8
Applications:	IHC
Recommended Dilution:	IHC 1:1200
Reactivity:	Human
Host:	Mouse
Isotype:	IgG1
Clonality:	Monoclonal
Immunogen:	Human recombinant protein fragment corresponding to amino acids 220-450 human Caldesmon (NP_149129) produced in E.coli.
Formulation:	Lyophilized powder (original buffer 1X PBS, pH 7.3, 8% trehalose)
Reconstitution Method:	For reconstitution, we recommend adding 100uL distilled water to a final antibody concentration of about 1 mg/mL. To use this carrier-free antibody for conjugation experiment, we strongly recommend performing another round of desalting process. (OriGene recommends Zeba Spin Desalting Columns, 7KMWCO from Thermo Scientific)
Concentration:	1mg/ml
Purification:	Purified from mouse ascites fluids or tissue culture supernatant by affinity chromatography (protein A/G)
Conjugation:	Unconjugated
Storage:	Shipped at -20°C or with ice packs, Upon delivery store at -20°C. Dilute in PBS(pH7.3) if necessary. Stable for 12 months from date of receipt. Avoid repeated freeze-thaws.
Stability:	Stable for 12 months from date of receipt.
Predicted Protein Size:	93.2 kDa
Gene Name:	caldesmon 1
Database Link:	NP_149129 Entrez Gene 800 Human Q05682



[View online »](#)

Background:

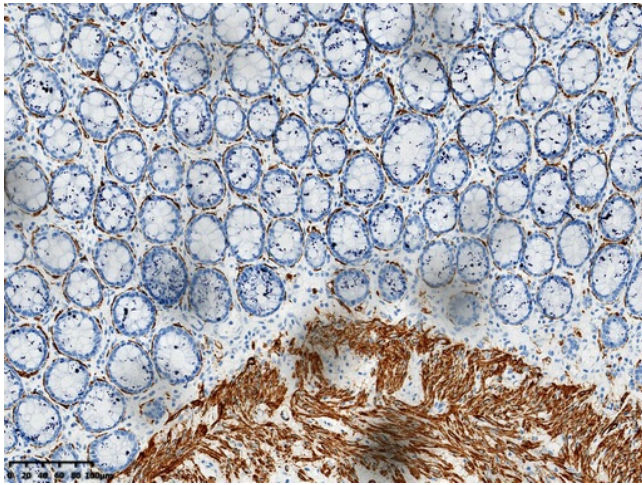
This gene encodes a calmodulin- and actin-binding protein that plays an essential role in the regulation of smooth muscle and nonmuscle contraction. The conserved domain of this protein possesses the binding activities to Ca(2+)-calmodulin, actin, tropomyosin, myosin, and phospholipids. This protein is a potent inhibitor of the actin-tropomyosin activated myosin MgATPase, and serves as a mediating factor for Ca(2+)-dependent inhibition of smooth muscle contraction. Alternative splicing of this gene results in multiple transcript variants encoding distinct isoforms. [provided by RefSeq, Jul 2008]

Synonyms:

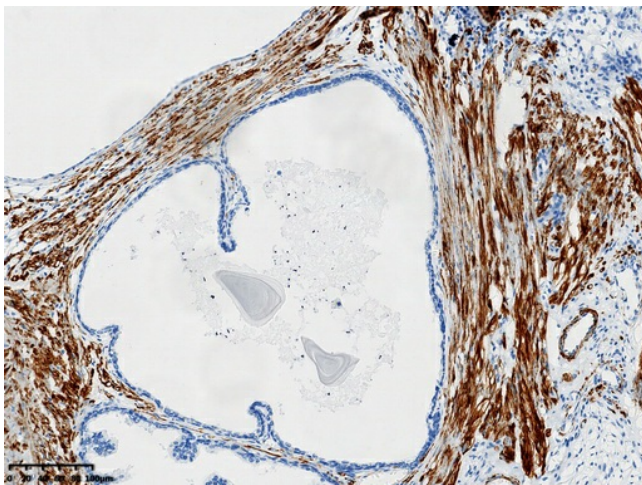
CDM; H-CAD; HCAD; L-CAD; LCAD; NAG22

Protein Pathways:

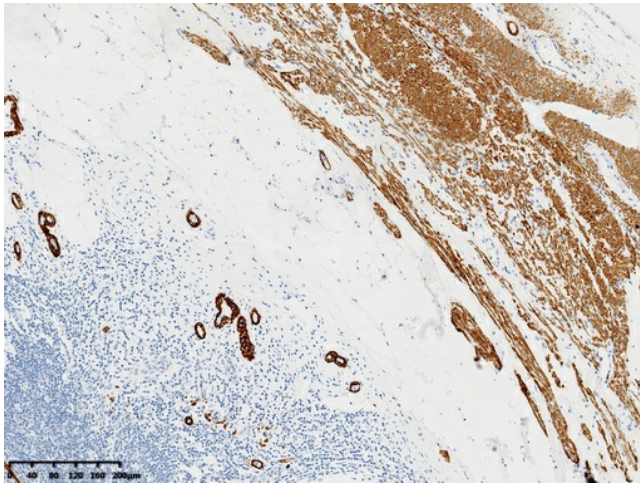
Vascular smooth muscle contraction

Product images:

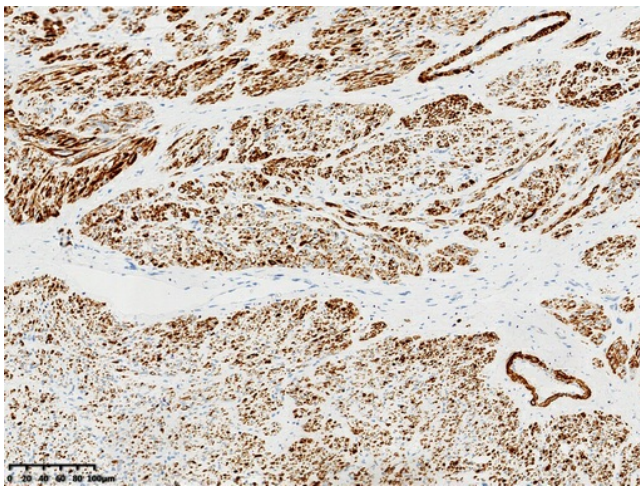
IHC staining of FFPE human colon tissue with in normal limits using anti-CALD1 mouse monoclonal antibody ([TA815302]) and Polink-2 HRP polymer detection kit ([D22-110]). Heat-induced epitope retrieval by EDTA solution buffer pH 8.0 ([B04C-100]) at 120°C for 3 min. The brown stain indicates positive stain, blue is the counter stain.



IHC staining of FFPE human prostate tissue with in normal limits using anti-CALD1 mouse monoclonal antibody ([TA815302]) and Polink-2 HRP polymer detection kit ([D22-110]). Heat-induced epitope retrieval by EDTA solution buffer pH 8.0 ([B04C-100]) at 120°C for 3 min. The brown stain indicates positive stain, blue is the counter stain.



IHC staining of FFPE human appendix tissue with in normal limits using anti-CALD1 mouse monoclonal antibody ([TA815302]) and Polink-2 HRP polymer detection kit ([D22-110]). Heat-induced epitope retrieval by EDTA solution buffer pH 8.0 ([B04C-100]) at 120°C for 3 min. The brown stain indicates positive stain, blue is the counter stain.



IHC staining of FFPE human uterine leiomyoma tissue using anti-CALD1 mouse monoclonal antibody ([TA815302]) and Polink-2 HRP polymer detection kit ([D22-110]). Heat-induced epitope retrieval by EDTA solution buffer pH 8.0 ([B04C-100]) at 120°C for 3 min. The brown stain indicates positive stain, blue is the counter stain.