

## Product datasheet for **CF815269**

### Neurofascin (NFASC) Mouse Monoclonal Antibody [Clone ID: OTI11A7]

#### Product data:

Product Type:	Primary Antibodies
Clone Name:	OTI11A7
Applications:	WB
Recommended Dilution:	WB 1:2000
Reactivity:	Human
Host:	Mouse
Isotype:	IgG1
Clonality:	Monoclonal
Immunogen:	Human recombinant protein fragment of human Nfasc186 (NP_001005388) produced in E.coli.
Formulation:	Lyophilized powder (original buffer 1X PBS, pH 7.3, 8% trehalose)
Reconstitution Method:	For reconstitution, we recommend adding 100uL distilled water to a final antibody concentration of about 1 mg/mL. To use this carrier-free antibody for conjugation experiment, we strongly recommend performing another round of desalting process. (OriGene recommends Zeba Spin Desalting Columns, 7KMWCO from Thermo Scientific)
Purification:	Purified from mouse ascites fluids or tissue culture supernatant by affinity chromatography (protein A/G)
Conjugation:	Unconjugated
Storage:	Shipped at -20°C or with ice packs, Upon delivery store at -20°C. Dilute in PBS(pH7.3) if necessary. Stable for 12 months from date of receipt. Avoid repeated freeze-thaws.
Stability:	Stable for 12 months from date of receipt.
Predicted Protein Size:	138.1 kDa
Gene Name:	neurofascin
Database Link:	<a href="#">NP_001005388</a> <a href="#">Entrez Gene 23114 Human</a> <a href="#">O94856</a>



[View online »](#)

**Background:**

This gene encodes an L1 family immunoglobulin cell adhesion molecule with multiple IGcam and fibronectin domains. The protein functions in neurite outgrowth, neurite fasciculation, and organization of the axon initial segment (AIS) and nodes of Ranvier on axons during early development. Both the AIS and nodes of Ranvier contain high densities of voltage-gated Na<sup>+</sup> (Nav) channels which are clustered by interactions with cytoskeletal and scaffolding proteins including this protein, gliomedin, ankyrin 3 (ankyrin-G), and betaIV spectrin. This protein links the AIS extracellular matrix to the intracellular cytoskeleton. This gene undergoes extensive alternative splicing, and the full-length nature of some variants has not been determined. [provided by RefSeq, May 2009]

**Synonyms:**

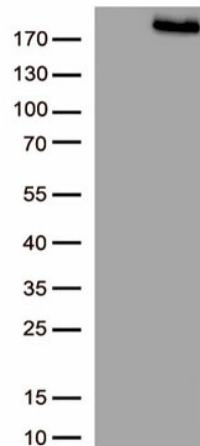
NEDCPMD; NF; NRCAML

**Protein Families:**

Transmembrane

**Protein Pathways:**

Cell adhesion molecules (CAMs)

**Product images:**

HEK293T cells were transfected with the pCMV6-ENTRY control (Left lane) or pCMV6-ENTRY Nfasc186 ([RC229070], Right lane) cDNA for 48 hrs and lysed. Equivalent amounts of cell lysates (15 ug per lane) were separated by SDS-PAGE and immunoblotted with anti-[TA815269].(1:2000)