

Product datasheet for **CF815058**

IGF2BP1 Mouse Monoclonal Antibody [Clone ID: OT11F7]

Product data:

Product Type:	Primary Antibodies
Clone Name:	OT11F7
Applications:	WB
Recommended Dilution:	WB 1:500
Reactivity:	Human, Mouse
Host:	Mouse
Isotype:	IgG1
Clonality:	Monoclonal
Immunogen:	Human recombinant protein fragment of human IGF2BP1 (NP_006537) produced in E.coli.
Formulation:	Lyophilized powder (original buffer 1X PBS, pH 7.3, 8% trehalose)
Reconstitution Method:	For reconstitution, we recommend adding 100uL distilled water to a final antibody concentration of about 1 mg/mL. To use this carrier-free antibody for conjugation experiment, we strongly recommend performing another round of desalting process. (OriGene recommends Zeba Spin Desalting Columns, 7KMWCO from Thermo Scientific)
Purification:	Purified from mouse ascites fluids or tissue culture supernatant by affinity chromatography (protein A/G)
Conjugation:	Unconjugated
Storage:	Shipped at -20°C or with ice packs, Upon delivery store at -20°C. Dilute in PBS(pH7.3) if necessary. Stable for 12 months from date of receipt. Avoid repeated freeze-thaws.
Stability:	Stable for 12 months from date of receipt.
Predicted Protein Size:	63.3 kDa
Gene Name:	insulin like growth factor 2 mRNA binding protein 1
Database Link:	NP_006537 Entrez Gene 140486 Mouse Entrez Gene 10642 Human Q9NZI8

[View online »](#)

Background:

This gene encodes a member of the insulin-like growth factor 2 mRNA-binding protein family. The protein encoded by this gene contains four K homology domains and two RNA recognition motifs. It functions by binding to the mRNAs of certain genes, including insulin-like growth factor 2, beta-actin and beta-transducin repeat-containing protein, and regulating their translation. Two transcript variants encoding different isoforms have been found for this gene. [provided by RefSeq, May 2009]

Synonyms:

CRD-BP; CRDBP; IMP-1; IMP1; VICKZ1; ZBP1

Product images:

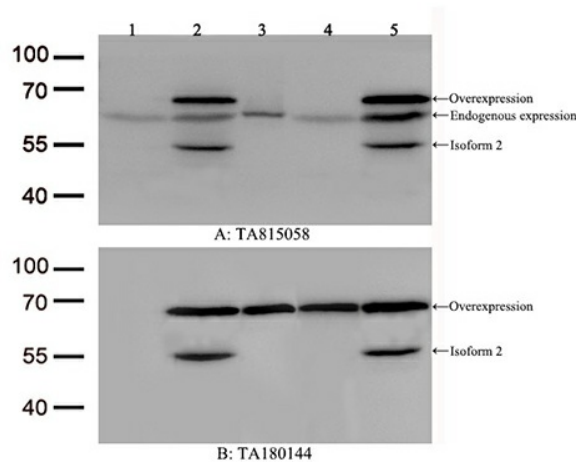
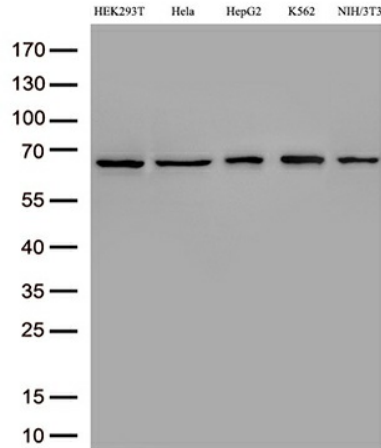


Figure A, Western blot analysis of overexpressed lysates (15ug per lane) from HEK293T cells transfected with empty plasmid ([PS100001], lane 1), human IGF2BP1 plasmid ([RC216226], lane 2), human IGF2BP2 plasmid ([RC205673], lane 3), human IGF2BP3 plasmid ([RC209597], lane 4), mouse IGF2BP1 plasmid ([MR209055], lane 5) using anti-IGF2BP1 antibody [TA815058](1:500). Figure B, Western blot analysis of the same samples as figure A with anti-DDK antibody ([TA180144], 1:1000)



Western blot analysis of extracts (50ug per lane) from 5 cell lines lysates by using anti-IGF2BP1 monoclonal antibody([TA815058], 1:500)