

Product datasheet for **CF815031**

PAH Mouse Monoclonal Antibody [Clone ID: OTI4F6]

Product data:

Product Type:	Primary Antibodies
Clone Name:	OTI4F6
Applications:	WB
Recommended Dilution:	WB 1:500
Reactivity:	Human, Mouse
Host:	Mouse
Isotype:	IgG1
Clonality:	Monoclonal
Immunogen:	Full length human recombinant protein of human PAH (NP_000268) produced in E.coli.
Formulation:	Lyophilized powder (original buffer 1X PBS, pH 7.3, 8% trehalose)
Reconstitution Method:	For reconstitution, we recommend adding 100uL distilled water to a final antibody concentration of about 1 mg/mL. To use this carrier-free antibody for conjugation experiment, we strongly recommend performing another round of desalting process. (OriGene recommends Zeba Spin Desalting Columns, 7KMWCO from Thermo Scientific)
Purification:	Purified from mouse ascites fluids or tissue culture supernatant by affinity chromatography (protein A/G)
Conjugation:	Unconjugated
Storage:	Shipped at -20°C or with ice packs, Upon delivery store at -20°C. Dilute in PBS(pH7.3) if necessary. Stable for 12 months from date of receipt. Avoid repeated freeze-thaws.
Stability:	Stable for 12 months from date of receipt.
Predicted Protein Size:	51.8 kDa
Gene Name:	phenylalanine hydroxylase
Database Link:	NP_000268 Entrez Gene 18478 Mouse Entrez Gene 5053 Human P00439



[View online »](#)

Background:

This gene encodes a member of the bipterin-dependent aromatic amino acid hydroxylase protein family. The encoded phenylalanine hydroxylase enzyme hydroxylates phenylalanine to tyrosine and is the rate-limiting step in phenylalanine catabolism. Deficiency of this enzyme activity results in the autosomal recessive disorder phenylketonuria. [provided by RefSeq, Aug 2017]

Synonyms:

PH; PKU; PKU1

Protein Families:

Druggable Genome

Protein Pathways:

Metabolic pathways, Phenylalanine, tyrosine and tryptophan biosynthesis, Phenylalanine metabolism

Product images:

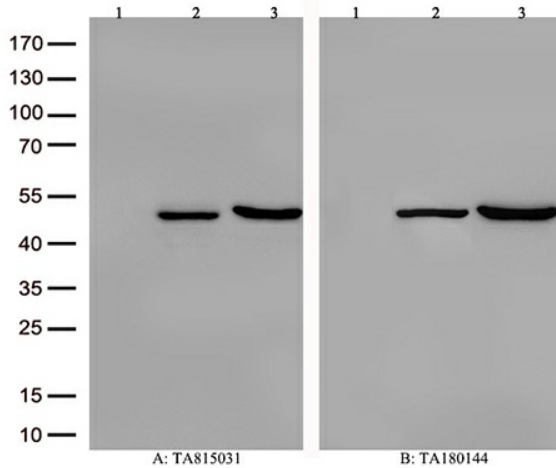
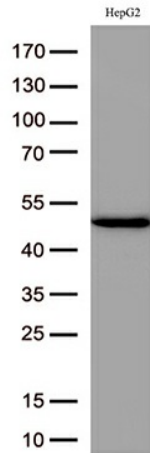


Figure A, Western blot analysis of overexpressed lysates(15ug per lane) from HEK293T cells transfected with empty plasmid ([PS100001], lane 1), human PAH plasmid ([RC204694], lane 2), mouse PAH plasmid ([MR207240], lane 3), using anti-PAH antibody [TA815031] (1:500). Figure B, Western blot analysis of the same samples as figure A with anti-DDK antibody ([TA180144], 1:1000)



Western blot analysis of extracts(50ug) from HepG2 cell lines lysates by using anti-PAH monoclonal antibody. ([TA815031], 1:500)