

## Product datasheet for **CF814249**

### GCDFP 15 (PIP) Mouse Monoclonal Antibody [Clone ID: OTI4F1]

#### Product data:

Product Type:	Primary Antibodies
Clone Name:	OTI4F1
Applications:	IHC
Recommended Dilution:	IHC 1:3000
Reactivity:	Human
Host:	Mouse
Isotype:	IgG1
Clonality:	Monoclonal
Immunogen:	Synthetic peptide (the amino acid sequence is considered to be commercially sensitive) within Human GCDFP-15 (NP_002643). The exact sequence is proprietary.
Formulation:	Lyophilized powder (original buffer 1X PBS, pH 7.3, 8% trehalose)
Reconstitution Method:	For reconstitution, we recommend adding 100uL distilled water to a final antibody concentration of about 1 mg/mL. To use this carrier-free antibody for conjugation experiment, we strongly recommend performing another round of desalting process. (OriGene recommends Zeba Spin Desalting Columns, 7KMWCO from Thermo Scientific)
Purification:	Purified from mouse ascites fluids or tissue culture supernatant by affinity chromatography (protein A/G)
Conjugation:	Unconjugated
Storage:	Shipped at -20°C or with ice packs, Upon delivery store at -20°C. Dilute in PBS(pH7.3) if necessary. Stable for 12 months from date of receipt. Avoid repeated freeze-thaws.
Stability:	Stable for 12 months from date of receipt.
Predicted Protein Size:	16.6 kDa
Gene Name:	prolactin induced protein
Database Link:	<a href="#">NP_002643</a> <a href="#">Entrez Gene 5304 Human</a> <a href="#">P12273</a>
Background:	Belongs to the PIP family. [UniProtKB/Swiss-Prot Function]

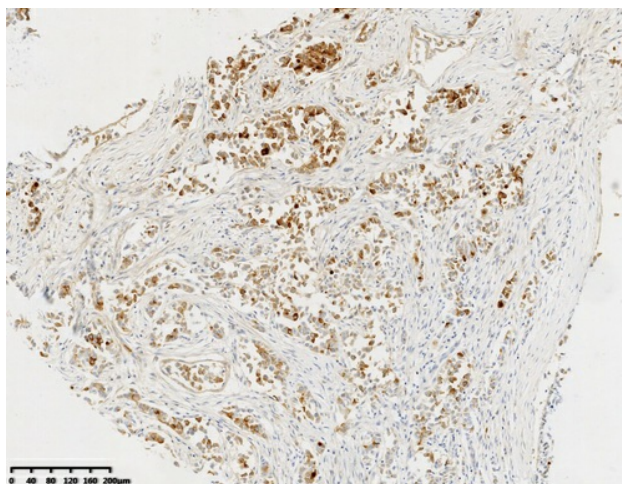


[View online »](#)

Synonyms: GCDFP-15; GCDFP15; GPIP4

Protein Families: Secreted Protein

### Product images:



Immunohistochemical staining of paraffin-embedded Adenocarcinoma of Human breast tissue using anti-GCDFP-15 mouse monoclonal antibody. (Heat-induced epitope retrieval by 1mM EDTA in 10mM Tris buffer (pH8.0) at 120°C for 3 min, [TA814249])