

Product datasheet for **CF814203**

Perforin (PRF1) Mouse Monoclonal Antibody [Clone ID: OTI10A2]

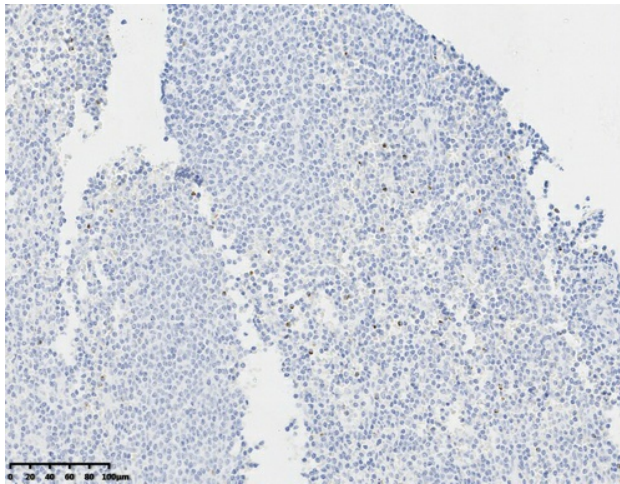
Product data:

Product Type:	Primary Antibodies
Clone Name:	OTI10A2
Applications:	IHC
Recommended Dilution:	IHC 1:75
Reactivity:	Human
Host:	Mouse
Isotype:	IgG1
Clonality:	Monoclonal
Immunogen:	Human recombinant protein fragment corresponding to amino acids 351-555 of human Perforin-1 (NP_005032) produced in E.coli.
Formulation:	Lyophilized powder (original buffer 1X PBS, pH 7.3, 8% trehalose)
Reconstitution Method:	For reconstitution, we recommend adding 100uL distilled water to a final antibody concentration of about 1 mg/mL. To use this carrier-free antibody for conjugation experiment, we strongly recommend performing another round of desalting process. (OriGene recommends Zeba Spin Desalting Columns, 7KMWCO from Thermo Scientific)
Purification:	Purified from mouse ascites fluids or tissue culture supernatant by affinity chromatography (protein A/G)
Conjugation:	Unconjugated
Storage:	Shipped at -20°C or with ice packs, Upon delivery store at -20°C. Dilute in PBS(pH7.3) if necessary. Stable for 12 months from date of receipt. Avoid repeated freeze-thaws.
Stability:	Stable for 12 months from date of receipt.
Predicted Protein Size:	61.38 kDa
Gene Name:	perforin 1
Database Link:	NP_005032 Entrez Gene 5551 Human P14222

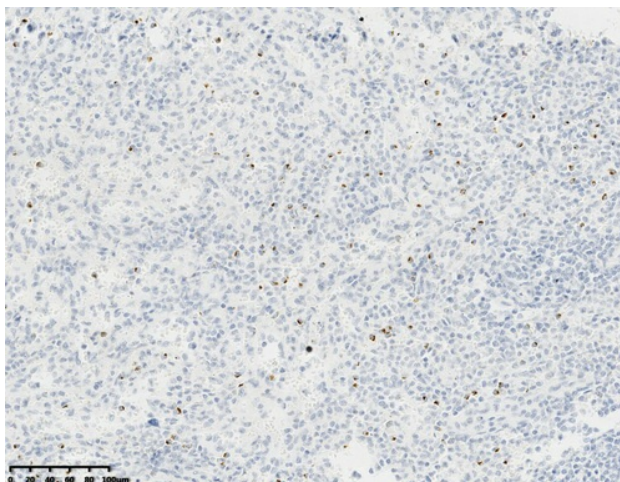


[View online »](#)

Background:	This gene encodes a protein with structural similarities to complement component C9 that is important in immunity. This protein forms membrane pores that allow the release of granzymes and subsequent cytolysis of target cells. Whether pore formation occurs in the plasma membrane of target cells or in an endosomal membrane inside target cells is subject to debate. Mutations in this gene are associated with a variety of human disease including diabetes, multiple sclerosis, lymphomas, autoimmune lymphoproliferative syndrome (ALPS), aplastic anemia, and familial hemophagocytic lymphohistiocytosis type 2 (FHL2), a rare and lethal autosomal recessive disorder of early childhood. [provided by RefSeq, Aug 2017]
Synonyms:	HPLH2; P1; PFP
Protein Families:	Druggable Genome
Protein Pathways:	Allograft rejection, Autoimmune thyroid disease, Graft-versus-host disease, Natural killer cell mediated cytotoxicity, Type I diabetes mellitus, Viral myocarditis

Product images:

Immunohistochemical staining of paraffin-embedded Human Lymphoma tissue using anti-Perforin-1 mouse monoclonal antibody. (Heat-induced epitope retrieval by 1mM EDTA in 10mM Tris buffer (pH9.0) at 120°C for 3 min, [TA814203])



Immunohistochemical staining of paraffin-embedded Human spleen tissue within the normal limits using anti-Perforin-1 mouse monoclonal antibody. (Heat-induced epitope retrieval by 1mM EDTA in 10mM Tris buffer (pH9.0) at 120°C for 3 min, [TA814203])