

Product datasheet for **CF814158**

HSD17B13 Mouse Monoclonal Antibody [Clone ID: OTI5C4]

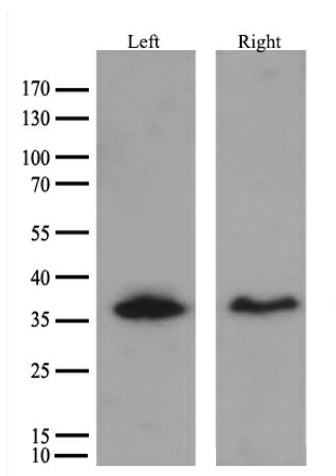
Product data:

Product Type:	Primary Antibodies
Clone Name:	OTI5C4
Applications:	IHC, WB
Recommended Dilution:	WB 1:500-1:1000, IHC 1:200
Reactivity:	Human
Host:	Mouse
Isotype:	IgG1
Clonality:	Monoclonal
Immunogen:	Human recombinant protein fragment corresponding to amino acids 20-300 of human HSD17B13 produced in E.coli.
Formulation:	Lyophilized powder (original buffer 1X PBS, pH 7.3, 8% trehalose)
Reconstitution Method:	For reconstitution, we recommend adding 100uL distilled water to a final antibody concentration of about 1 mg/mL. To use this carrier-free antibody for conjugation experiment, we strongly recommend performing another round of desalting process. (OriGene recommends Zeba Spin Desalting Columns, 7KMWCO from Thermo Scientific)
Purification:	Purified from mouse ascites fluids or tissue culture supernatant by affinity chromatography (protein A/G)
Conjugation:	Unconjugated
Storage:	Store at -20°C as received.
Stability:	Stable for 12 months from date of receipt.
Predicted Protein Size:	33.7 kDa
Gene Name:	hydroxysteroid 17-beta dehydrogenase 13
Database Link:	NP_835236 Entrez Gene 345275 Human Q7Z5P4
Synonyms:	HMFN0376; NIIL497; SCDR9; SDR16C3
Protein Families:	Druggable Genome, Secreted Protein, Transmembrane



[View online »](#)

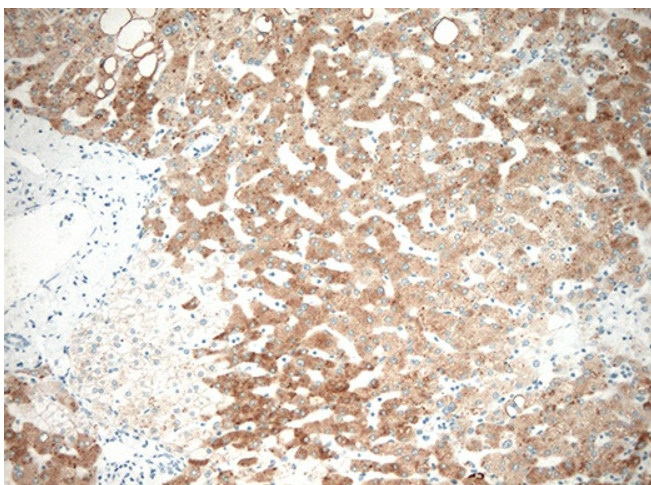
Product images:



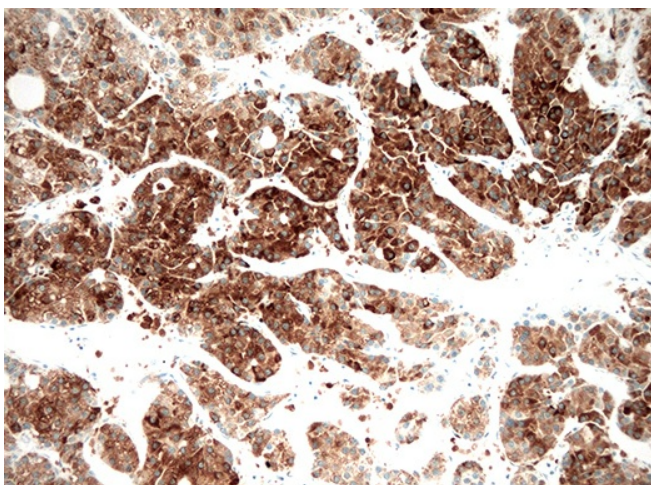
Western blot analysis of overexpressed human HSD17B13 lysate (5ug [LY405941], LEFT) and purified recombinant protein (0.02ug [TP313132], RIGHT) by using anti-HSD17B13 antibody ([TA814158]).



HEK293T cells were transfected with 10 different plasmids of human HSD cDNA (HSD11B1, HSD17B2, HSD17B3, HSD17B4, HSD17B6, HSD17B7, HSD17B8, HSD17B10, HSD17B11, HSD17B13) for 48 hrs and lysed. Equivalent amounts of cell lysates (10ug per lane) were separated by SDS-PAGE and immunoblotted with anti-HSD17B13 mouse monoclonal antibody. HSD17B13 was positive, while all others were negative. ([TA814158], 10500)



Immunohistochemical staining of paraffin-embedded Human liver tissue within the normal limits using anti-HSD17B13 mouse monoclonal antibody, [TA814158] (1:200). *Heat-induced epitope retrieval by 1mM EDTA in 10mM Tris buffer (pH8.5) at 120°C for 3 min.



Immunohistochemical staining of paraffin-embedded Carcinoma of Human liver tissue using anti-HSD17B13 mouse monoclonal antibody, [TA814158] (1:200). *Heat-induced epitope retrieval by 1mM EDTA in 10mM Tris buffer (pH8.5) at 120°C for 3 min.