

## Product datasheet for **CF813972**

### CD61 (ITGB3) Mouse Monoclonal Antibody [Clone ID: OTI5D9]

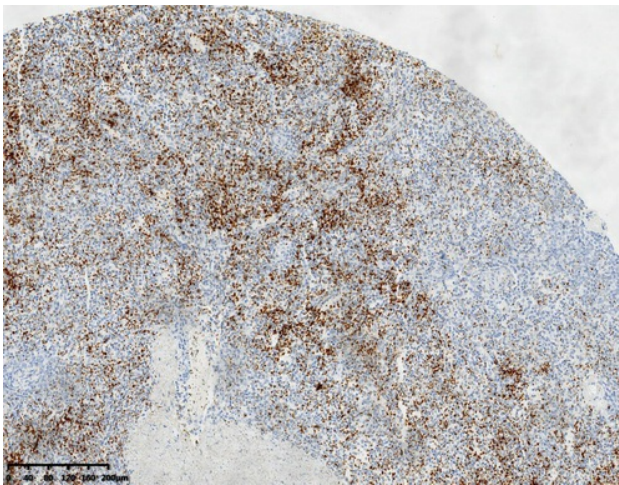
#### Product data:

Product Type:	Primary Antibodies
Clone Name:	OTI5D9
Applications:	IHC
Recommended Dilution:	IHC 1:100
Reactivity:	Human, Mouse, Rat
Host:	Mouse
Isotype:	IgG1
Clonality:	Monoclonal
Immunogen:	Human recombinant protein fragment corresponding to amino acids 536-718 of human CD61 (NP_000203) produced in E.coli.
Formulation:	Lyophilized powder (original buffer 1X PBS, pH 7.3, 8% trehalose)
Reconstitution Method:	For reconstitution, we recommend adding 100uL distilled water to a final antibody concentration of about 1 mg/mL. To use this carrier-free antibody for conjugation experiment, we strongly recommend performing another round of desalting process. (OriGene recommends Zeba Spin Desalting Columns, 7KMWCO from Thermo Scientific)
Purification:	Purified from mouse ascites fluids or tissue culture supernatant by affinity chromatography (protein A/G)
Conjugation:	Unconjugated
Storage:	Shipped at -20°C or with ice packs, Upon delivery store at -20°C. Dilute in PBS(pH7.3) if necessary. Stable for 12 months from date of receipt. Avoid repeated freeze-thaws.
Stability:	Stable for 12 months from date of receipt.
Predicted Protein Size:	87.06 kDa
Gene Name:	integrin subunit beta 3
Database Link:	<a href="#">NP_000203</a> <a href="#">Entrez Gene 16416 Mouse</a> <a href="#">Entrez Gene 29302 Rat</a> <a href="#">Entrez Gene 3690 Human</a> <a href="#">P05106</a>



[View online »](#)

<b>Background:</b>	The ITGB3 protein product is the integrin beta chain beta 3. Integrins are integral cell-surface proteins composed of an alpha chain and a beta chain. A given chain may combine with multiple partners resulting in different integrins. Integrin beta 3 is found along with the alpha IIb chain in platelets. Integrins are known to participate in cell adhesion as well as cell-surface mediated signalling. [provided by RefSeq, Jul 2008]
<b>Synonyms:</b>	BDPLT2; BDPLT16; BDPLT24; CD61; GP3A; GPIIIa; GT; GT2
<b>Protein Families:</b>	Druggable Genome, ES Cell Differentiation/IPS, Transmembrane
<b>Protein Pathways:</b>	Arrhythmogenic right ventricular cardiomyopathy (ARVC), Dilated cardiomyopathy, ECM-receptor interaction, Focal adhesion, Hematopoietic cell lineage, Hypertrophic cardiomyopathy (HCM), Regulation of actin cytoskeleton

**Product images:**

Immunohistochemical staining of paraffin-embedded Human spleen tissue within the normal limits using anti-CD61 mouse monoclonal antibody. (Heat-induced epitope retrieval by 1mM EDTA in 10mM Tris buffer (pH8.0) at 120°C for 3 min, [TA813972])