

Product datasheet for **CF813920**

bcl 6 (BCL6) Mouse Monoclonal Antibody [Clone ID: OTI14E10]

Product data:

Product Type:	Primary Antibodies
Clone Name:	OTI14E10
Applications:	IHC
Recommended Dilution:	IHC 1:200
Reactivity:	Human, Mouse, Rat
Host:	Mouse
Isotype:	IgG1
Clonality:	Monoclonal
Immunogen:	Human recombinant protein fragment corresponding to amino acids 1-350 of human BCL-6 (NP_001697) produced in E.coli.
Formulation:	Lyophilized powder (original buffer 1X PBS, pH 7.3, 8% trehalose)
Reconstitution Method:	For reconstitution, we recommend adding 100uL distilled water to a final antibody concentration of about 1 mg/mL. To use this carrier-free antibody for conjugation experiment, we strongly recommend performing another round of desalting process. (OriGene recommends Zeba Spin Desalting Columns, 7KMWCO from Thermo Scientific)
Purification:	Purified from mouse ascites fluids or tissue culture supernatant by affinity chromatography (protein A/G)
Conjugation:	Unconjugated
Storage:	Shipped at -20°C or with ice packs, Upon delivery store at -20°C. Dilute in PBS(pH7.3) if necessary. Stable for 12 months from date of receipt. Avoid repeated freeze-thaws.
Stability:	Stable for 12 months from date of receipt.
Predicted Protein Size:	78.7 kDa
Gene Name:	BCL6 transcription repressor
Database Link:	NP_001697 Entrez Gene 12053 Mouse Entrez Gene 303836 Rat Entrez Gene 604 Human P41182



[View online »](#)

Background:

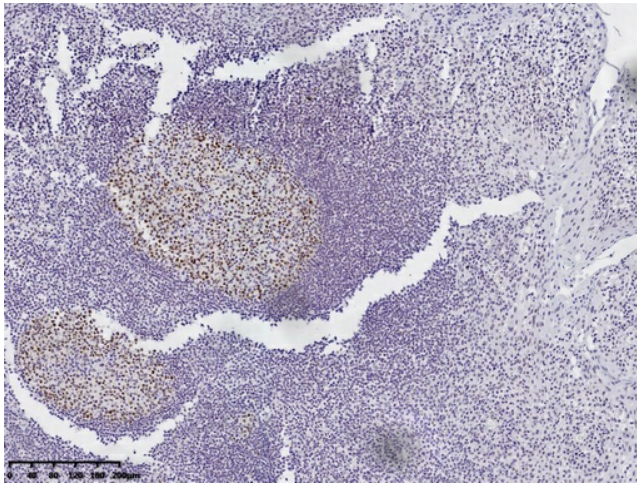
The protein encoded by this gene is a zinc finger transcription factor and contains an N-terminal POZ domain. This protein acts as a sequence-specific repressor of transcription, and has been shown to modulate the transcription of STAT-dependent IL-4 responses of B cells. This protein can interact with a variety of POZ-containing proteins that function as transcription corepressors. This gene is found to be frequently translocated and hypermutated in diffuse large-cell lymphoma (DLCL), and may be involved in the pathogenesis of DLCL. Alternatively spliced transcript variants encoding different protein isoforms have been found for this gene. [provided by RefSeq, Aug 2015]

Synonyms:

BCL5; BCL6A; LAZ3; ZBTB27; ZNF51

Protein Families:

Druggable Genome, Transcription Factors

Product images:

Immunohistochemical staining of paraffin-embedded Human tonsil within the normal limits using anti-BCL-6 mouse monoclonal antibody. (Heat-induced epitope retrieval by 1mM EDTA in 10mM Tris buffer (pH9.0) at 120°C for 3 min, [TA813920])