

## Product datasheet for **CF813918**

### **bcl 6 (BCL6) Mouse Monoclonal Antibody [Clone ID: OTI8H3]**

#### **Product data:**

<b>Product Type:</b>	Primary Antibodies
<b>Clone Name:</b>	OTI8H3
<b>Applications:</b>	IHC
<b>Recommended Dilution:</b>	IHC 1:400
<b>Reactivity:</b>	Human, Mouse, Rat
<b>Host:</b>	Mouse
<b>Isotype:</b>	IgG1
<b>Clonality:</b>	Monoclonal
<b>Immunogen:</b>	Human recombinant protein fragment corresponding to amino acids 1-350 of human BCL-6 (NP_001697) produced in E.coli.
<b>Formulation:</b>	Lyophilized powder (original buffer 1X PBS, pH 7.3, 8% trehalose)
<b>Reconstitution Method:</b>	For reconstitution, we recommend adding 100uL distilled water to a final antibody concentration of about 1 mg/mL. To use this carrier-free antibody for conjugation experiment, we strongly recommend performing another round of desalting process. (OriGene recommends Zeba Spin Desalting Columns, 7KMWCO from Thermo Scientific)
<b>Purification:</b>	Purified from mouse ascites fluids or tissue culture supernatant by affinity chromatography (protein A/G)
<b>Conjugation:</b>	Unconjugated
<b>Storage:</b>	Shipped at -20°C or with ice packs, Upon delivery store at -20°C. Dilute in PBS(pH7.3) if necessary. Stable for 12 months from date of receipt. Avoid repeated freeze-thaws.
<b>Stability:</b>	Stable for 12 months from date of receipt.
<b>Predicted Protein Size:</b>	78.7 kDa
<b>Gene Name:</b>	BCL6 transcription repressor
<b>Database Link:</b>	<a href="#">NP_001697</a> <a href="#">Entrez Gene 12053 Mouse</a> <a href="#">Entrez Gene 303836 Rat</a> <a href="#">Entrez Gene 604 Human</a> <a href="#">P41182</a>



[View online »](#)

**Background:**

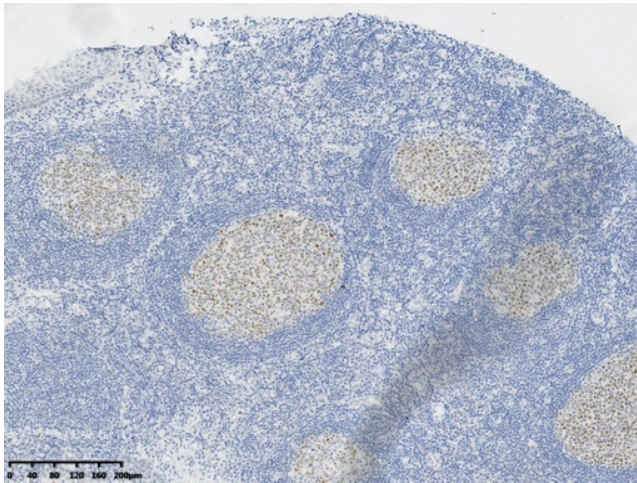
The protein encoded by this gene is a zinc finger transcription factor and contains an N-terminal POZ domain. This protein acts as a sequence-specific repressor of transcription, and has been shown to modulate the transcription of STAT-dependent IL-4 responses of B cells. This protein can interact with a variety of POZ-containing proteins that function as transcription corepressors. This gene is found to be frequently translocated and hypermutated in diffuse large-cell lymphoma (DLCL), and may be involved in the pathogenesis of DLCL. Alternatively spliced transcript variants encoding different protein isoforms have been found for this gene. [provided by RefSeq, Aug 2015]

**Synonyms:**

BCL5; BCL6A; LAZ3; ZBTB27; ZNF51

**Protein Families:**

Druggable Genome, Transcription Factors

**Product images:**

Immunohistochemical staining of paraffin-embedded Human tonsil within the normal limits using anti-BCL-6 mouse monoclonal antibody. (Heat-induced epitope retrieval by 1mM EDTA in 10mM Tris buffer (pH9.0) at 120°C for 3 min, [TA813918])