

Product datasheet for **CF813842**

CD38 Mouse Monoclonal Antibody [Clone ID: OTI8D5]

Product data:

Product Type:	Primary Antibodies
Clone Name:	OTI8D5
Applications:	FC, WB
Recommended Dilution:	WB 1:1000, FLOW 1:100
Reactivity:	Human
Host:	Mouse
Isotype:	IgG1
Clonality:	Monoclonal
Immunogen:	Full length human recombinant protein of human CD38 (NP_001766) produced in HEK293T cell.
Formulation:	Lyophilized powder (original buffer 1X PBS, pH 7.3, 8% trehalose)
Reconstitution Method:	For reconstitution, we recommend adding 100uL distilled water to a final antibody concentration of about 1 mg/mL. To use this carrier-free antibody for conjugation experiment, we strongly recommend performing another round of desalting process. (OriGene recommends Zeba Spin Desalting Columns, 7KMWCO from Thermo Scientific)
Purification:	Purified from mouse ascites fluids or tissue culture supernatant by affinity chromatography (protein A/G)
Conjugation:	Unconjugated
Storage:	Shipped at -20°C or with ice packs, Upon delivery store at -20°C. Dilute in PBS(pH7.3) if necessary. Stable for 12 months from date of receipt. Avoid repeated freeze-thaws.
Stability:	Stable for 12 months from date of receipt.
Predicted Protein Size:	34.3 kDa
Gene Name:	CD38 molecule
Database Link:	NP_001766 Entrez Gene 952 Human P28907



[View online »](#)

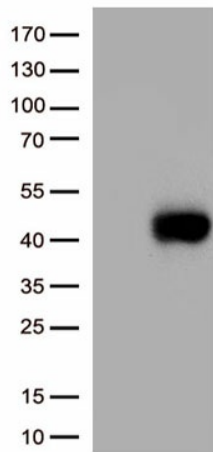
Background: Synthesizes the second messengers cyclic ADP-ribose and nicotinate-adenine dinucleotide phosphate, the former a second messenger for glucose-induced insulin secretion. Also has cADPr hydrolase activity. Also moonlights as a receptor in cells of the immune system. [UniProtKB/Swiss-Prot Function]

Synonyms: ADPRC 1; ADPRC1

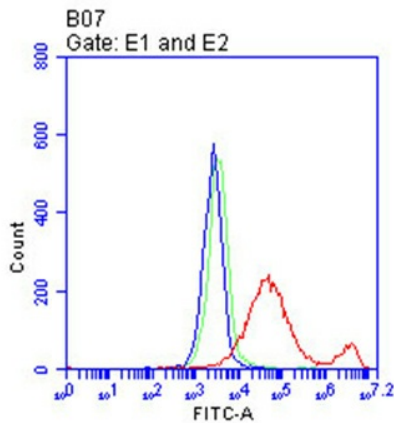
Protein Families: Cancer stem cells, Druggable Genome, ES Cell Differentiation/IPS, Induced pluripotent stem cells, Transmembrane

Protein Pathways: Calcium signaling pathway, Hematopoietic cell lineage, Metabolic pathways, Nicotinate and nicotinamide metabolism

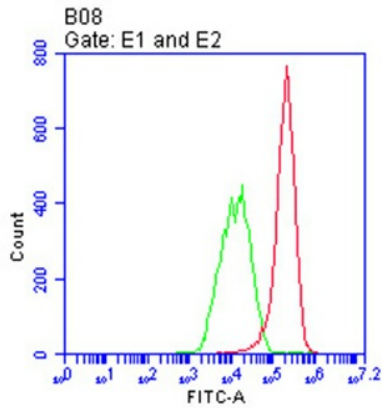
Product images:



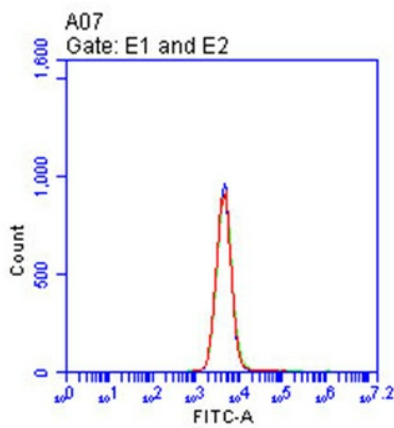
HEK293T cells were transfected with the pCMV6-ENTRY control (Left lane) or pCMV6-ENTRY CD38 ([RC203179], Right lane) cDNA for 48 hrs and lysed. Equivalent amounts of cell lysates (5 ug per lane) were separated by SDS-PAGE and immunoblotted with anti-CD38.(1:1000)



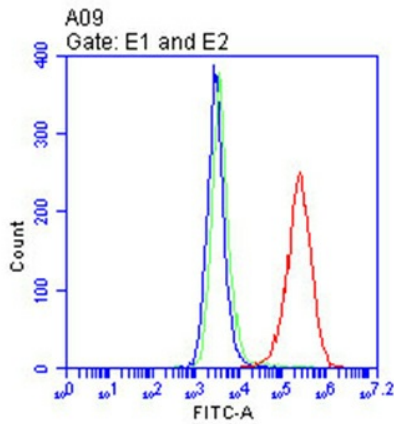
Flow cytometric analysis of living 293T cells transfected with CD38 overexpression plasmid ([RC203179], Red)/empty vector ([PS100001], Blue) using anti-CD38 antibody ([TA813842]). Cells incubated with a non-specific antibody (Green) were used as isotype control. □1□100□



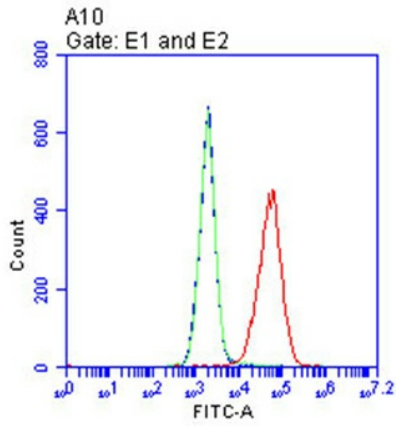
Flow cytometric analysis of living Raji cells, using anti-CD38 antibody([TA813842], Red), compared to an isotype control (green).(1:100)



Flow cytometric analysis of living K562 cells, using anti-CD38 antibody([TA813842], Red), compared to an isotype control (green), and a PBS control (blue).(1:100)



Flow cytometric analysis of living RPMI-8226 cells, using anti-CD38 antibody([TA813842], Red), compared to an isotype control (green), and a PBS control (blue).(1:100)



Flow cytometric analysis of living OPM2 cells, using anti-CD38 antibody([TA813842], Red), compared to an isotype control (green), and a PBS control (blue).(1:100)