

## Product datasheet for **CF813762**

### CTNND1 Mouse Monoclonal Antibody [Clone ID: OTI6A11]

#### Product data:

Product Type:	Primary Antibodies
Clone Name:	OTI6A11
Applications:	IHC
Recommended Dilution:	IHC 1:10
Reactivity:	Human, Mouse, Rat
Host:	Mouse
Isotype:	IgG2b
Clonality:	Monoclonal
Immunogen:	Full length human recombinant protein of human p120-catenin (NP_001078927) produced in E.coli.
Formulation:	Lyophilized powder (original buffer 1X PBS, pH 7.3, 8% trehalose)
Reconstitution Method:	For reconstitution, we recommend adding 100uL distilled water to a final antibody concentration of about 1 mg/mL. To use this carrier-free antibody for conjugation experiment, we strongly recommend performing another round of desalting process. (OriGene recommends Zeba Spin Desalting Columns, 7KMWCO from Thermo Scientific)
Purification:	Purified from mouse ascites fluids or tissue culture supernatant by affinity chromatography (protein A/G)
Conjugation:	Unconjugated
Storage:	Shipped at -20°C or with ice packs, Upon delivery store at -20°C. Dilute in PBS(pH7.3) if necessary. Stable for 12 months from date of receipt. Avoid repeated freeze-thaws.
Stability:	Stable for 12 months from date of receipt.
Predicted Protein Size:	108.2 kDa
Gene Name:	catenin delta 1
Database Link:	<a href="#">NP_001078927</a> <a href="#">Entrez Gene 12388 Mouse</a> <a href="#">Entrez Gene 311163 Rat</a> <a href="#">Entrez Gene 1500 Human</a> <a href="#">O60716</a>



[View online »](#)

**Background:**

This gene encodes a member of the Armadillo protein family, which function in adhesion between cells and signal transduction. Multiple translation initiation codons and alternative splicing result in many different isoforms being translated. Not all of the full-length nature of the described transcript variants have been determined. Read-through transcription also exists between this gene and the neighboring upstream thioredoxin-related transmembrane protein 2 (TMX2) gene. [provided by RefSeq, Dec 2010]

**Synonyms:**

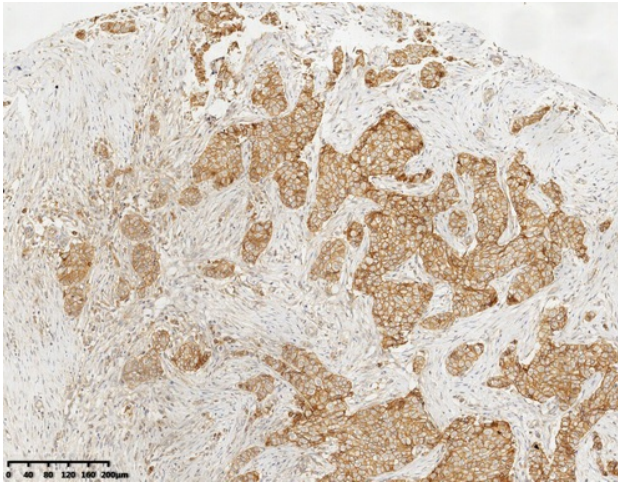
BCDS2; CAS; CTNND; p120; p120(CAS); p120(CTN); P120CAS; P120CTN

**Protein Families:**

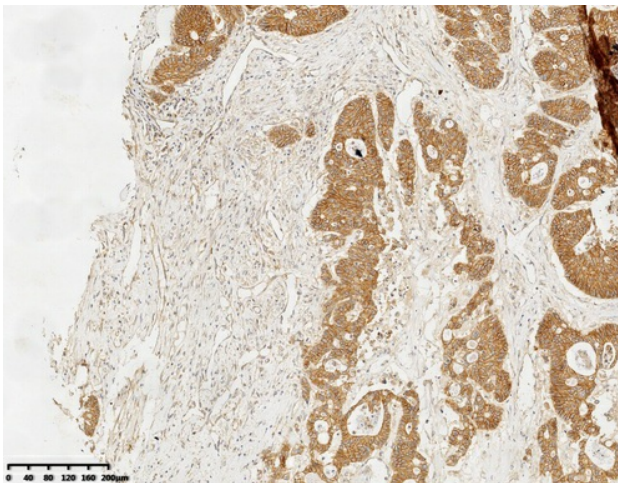
Druggable Genome

**Protein Pathways:**

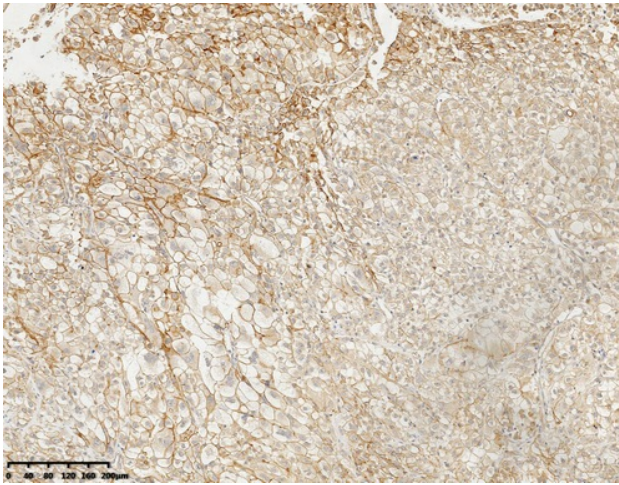
Adherens junction, Leukocyte transendothelial migration

**Product images:**

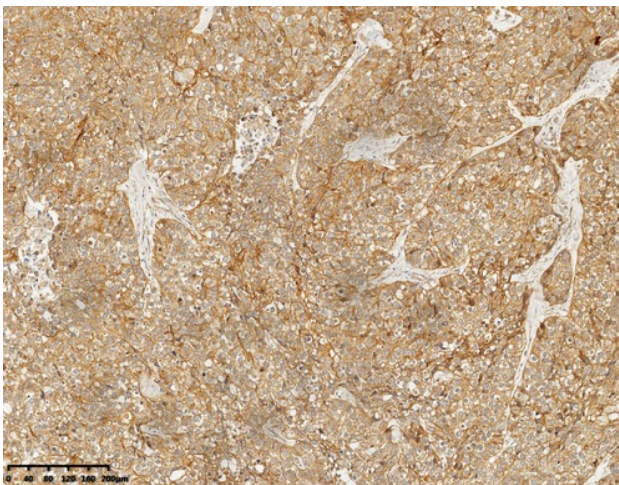
Immunohistochemical staining of paraffin-embedded Adenocarcinoma of Human breast tissue using anti-p120-catenin mouse monoclonal antibody. (Heat-induced epitope retrieval by 1mM EDTA in 10mM Tris buffer (pH8.0) at 120°C for 3 min, [TA813762])



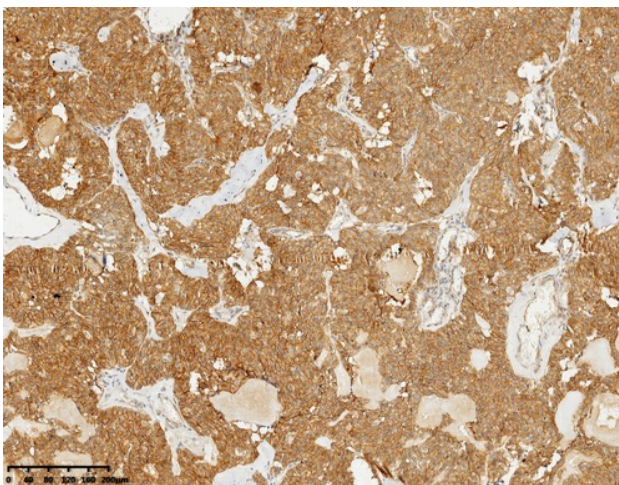
Immunohistochemical staining of paraffin-embedded Adenocarcinoma of Human colon tissue using anti-p120-catenin mouse monoclonal antibody. (Heat-induced epitope retrieval by 1mM EDTA in 10mM Tris buffer (pH8.0) at 120°C for 3 min, [TA813762])



Immunohistochemical staining of paraffin-embedded Carcinoma of Human kidney tissue using anti-p120-catenin mouse monoclonal antibody. (Heat-induced epitope retrieval by 1mM EDTA in 10mM Tris buffer (pH8.0) at 120°C for 3 min, [TA813762])

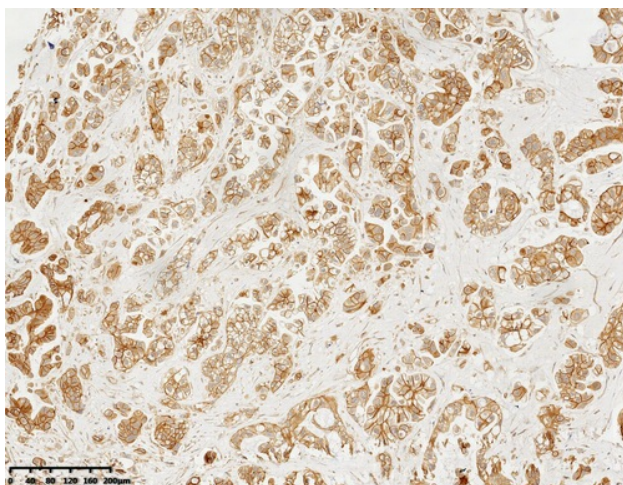


Immunohistochemical staining of paraffin-embedded Carcinoma of Human lung tissue using anti-p120-catenin mouse monoclonal antibody. (Heat-induced epitope retrieval by 1mM EDTA in 10mM Tris buffer (pH8.0) at 120°C for 3 min, [TA813762])

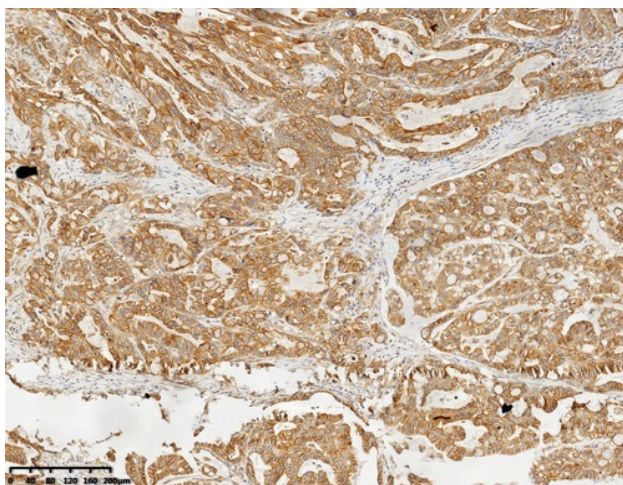


Immunohistochemical staining of paraffin-embedded Carcinoma of Human thyroid tissue using anti-p120-catenin mouse monoclonal antibody. (Heat-induced epitope retrieval by 1mM EDTA in 10mM Tris buffer (pH8.0) at 120°C for 3 min, [TA813762])





Immunohistochemical staining of paraffin-embedded Carcinoma of Human prostate tissue using anti-p120-catenin mouse monoclonal antibody. (Heat-induced epitope retrieval by 1mM EDTA in 10mM Tris buffer (pH8.0) at 120°C for 3 min, [TA813762])



Immunohistochemical staining of paraffin-embedded Human Gastric Carcinoma using anti-p120-catenin mouse monoclonal antibody. (Heat-induced epitope retrieval by 1mM EDTA in 10mM Tris buffer (pH8.0) at 120°C for 3 min, [TA813762])