

Product datasheet for **CF813688**

CD28 Mouse Monoclonal Antibody [Clone ID: OTI1A2]

Product data:

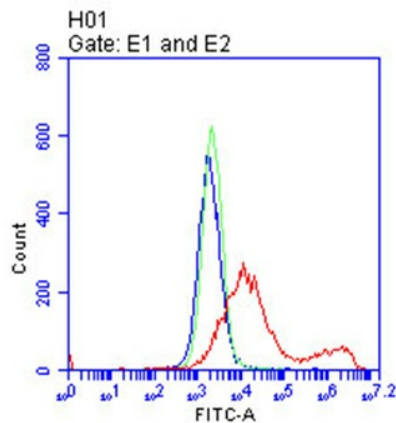
Product Type:	Primary Antibodies
Clone Name:	OTI1A2
Applications:	FC
Recommended Dilution:	FLOW 1:100
Reactivity:	Human
Host:	Mouse
Isotype:	IgG1
Clonality:	Monoclonal
Immunogen:	Full length human recombinant protein of human CD28 (NP_006130) produced in HEK293T cell.
Formulation:	Lyophilized powder (original buffer 1X PBS, pH 7.3, 8% trehalose)
Reconstitution Method:	For reconstitution, we recommend adding 100uL distilled water to a final antibody concentration of about 1 mg/mL. To use this carrier-free antibody for conjugation experiment, we strongly recommend performing another round of desalting process. (OriGene recommends Zeba Spin Desalting Columns, 7KMWCO from Thermo Scientific)
Purification:	Purified from mouse ascites fluids or tissue culture supernatant by affinity chromatography (protein A/G)
Conjugation:	Unconjugated
Storage:	Shipped at -20°C or with ice packs, Upon delivery store at -20°C. Dilute in PBS(pH7.3) if necessary. Stable for 12 months from date of receipt. Avoid repeated freeze-thaws.
Stability:	Stable for 12 months from date of receipt.
Predicted Protein Size:	25.1 kDa
Gene Name:	CD28 molecule
Database Link:	NP_006130 Entrez Gene 940 Human P10747



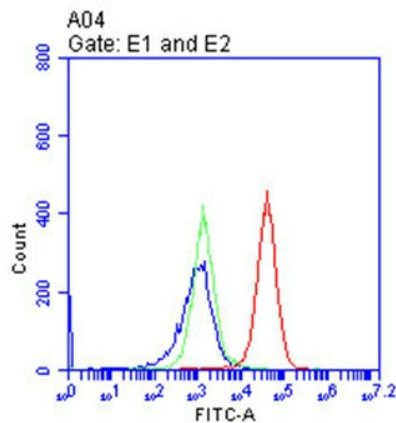
[View online »](#)

Background:	The protein encoded by this gene is essential for T-cell proliferation and survival, cytokine production, and T-helper type-2 development. Several alternatively spliced transcript variants encoding different isoforms have been found for this gene.[provided by RefSeq, Jul 2011]
Synonyms:	Tp44
Protein Families:	Druggable Genome, Transmembrane
Protein Pathways:	Allograft rejection, Autoimmune thyroid disease, Cell adhesion molecules (CAMs), Graft-versus-host disease, Systemic lupus erythematosus, T cell receptor signaling pathway, Type I diabetes mellitus, Viral myocarditis

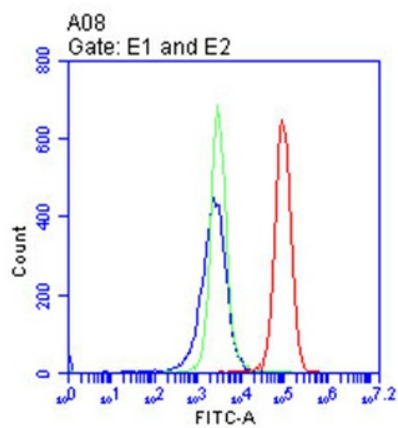
Product images:



Flow cytometric analysis of living 293T cells transfected with CD28 overexpression plasmid ([RC211318]), Red/empty vector ([PS100001], Blue) using anti-CD28 antibody ([TA813688]). Cells incubated with a non-specific antibody (Green) were used as isotype control.(1:100)



Flow cytometric analysis of living Jurkat cells, using anti-CD28 antibody([TA813688], Red), compared to an isotype control (green), and a PBS control (blue).(1:100)



Flow cytometric analysis of living RPMI-8226 cells, using anti-CD28 antibody ([TA813688], Red), compared to an isotype control (green), and a PBS control (blue), (1:100)