

## Product datasheet for **CF813587**

### MICB Mouse Monoclonal Antibody [Clone ID: OTI4C8]

#### Product data:

Product Type:	Primary Antibodies
Clone Name:	OTI4C8
Applications:	FC
Recommended Dilution:	FLOW 1:100
Reactivity:	Human
Host:	Mouse
Isotype:	IgG1
Clonality:	Monoclonal
Immunogen:	Human recombinant protein fragment corresponding to amino acids 23-309 of human MICB (NP_005922) produced in E.coli.
Formulation:	Lyophilized powder (original buffer 1X PBS, pH 7.3, 8% trehalose)
Reconstitution Method:	For reconstitution, we recommend adding 100uL distilled water to a final antibody concentration of about 1 mg/mL. To use this carrier-free antibody for conjugation experiment, we strongly recommend performing another round of desalting process. (OriGene recommends Zeba Spin Desalting Columns, 7KMWCO from Thermo Scientific)
Purification:	Purified from mouse ascites fluids or tissue culture supernatant by affinity chromatography (protein A/G)
Conjugation:	Unconjugated
Storage:	Shipped at -20°C or with ice packs, Upon delivery store at -20°C. Dilute in PBS(pH7.3) if necessary. Stable for 12 months from date of receipt. Avoid repeated freeze-thaws.
Stability:	Stable for 12 months from date of receipt.
Predicted Protein Size:	42.4 kDa
Gene Name:	MHC class I polypeptide-related sequence B
Database Link:	<a href="#">NP_005922</a> <a href="#">Entrez Gene 4277 Human</a> <a href="#">Q29980</a>



[View online »](#)

**Background:**

This gene encodes a heavily glycosylated protein which is a ligand for the NKG2D type II receptor. Binding of the ligand activates the cytolytic response of natural killer (NK) cells, CD8 alphabeta T cells, and gammadelta T cells which express the receptor. This protein is stress-induced and is similar to MHC class I molecules; however, it does not associate with beta-2-microglobulin or bind peptides. Alternative splicing results in multiple transcript variants. [provided by RefSeq, Jan 2014]

**Synonyms:**

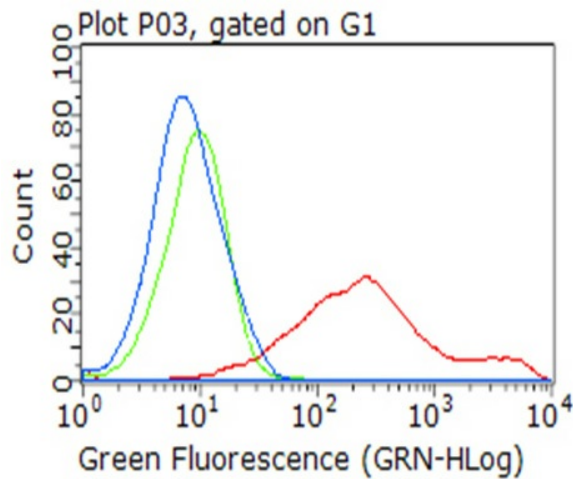
PERB11.2

**Protein Families:**

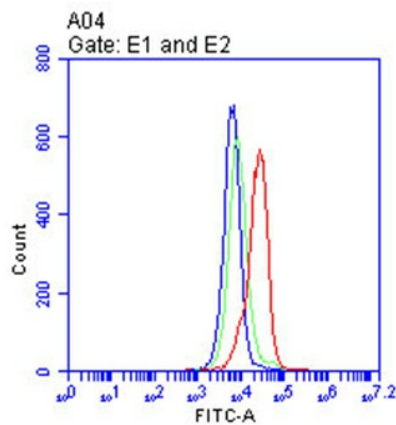
Druggable Genome

**Protein Pathways:**

Natural killer cell mediated cytotoxicity

**Product images:**


Flow cytometric analysis of living 293T cells transfected with MICB overexpression plasmid ([RC222315], Red)/empty vector ([PS100001], Blue) using anti-MICB antibody ([TA813587]). Cells incubated with a non-specific antibody (Green) were used as isotype control.(1:100)



Flow cytometric analysis of living K562 cells, using anti-MICB antibody([TA813587], Red), compared to an isotype control (green), and a PBS control (blue).(1:100)