

## Product datasheet for **CF813473**

### IL2 Receptor alpha (IL2RA) Mouse Monoclonal Antibody [Clone ID: OTI2A5]

#### Product data:

Product Type:	Primary Antibodies
Clone Name:	OTI2A5
Applications:	FC
Recommended Dilution:	Flow 1:100
Reactivity:	Human
Host:	Mouse
Isotype:	IgG2a
Clonality:	Monoclonal
Immunogen:	Full length human recombinant protein of human IL2RA (NP_000408) produced in HEK293T cell.
Formulation:	Lyophilized powder (original buffer 1X PBS, pH 7.3, 8% trehalose)
Reconstitution Method:	For reconstitution, we recommend adding 100uL distilled water to a final antibody concentration of about 1 mg/mL. To use this carrier-free antibody for conjugation experiment, we strongly recommend performing another round of desalting process. (OriGene recommends Zeba Spin Desalting Columns, 7KMWCO from Thermo Scientific)
Purification:	Purified from mouse ascites fluids or tissue culture supernatant by affinity chromatography (protein A/G)
Conjugation:	Unconjugated
Storage:	Shipped at -20°C or with ice packs, Upon delivery store at -20°C. Dilute in PBS(pH7.3) if necessary. Stable for 12 months from date of receipt. Avoid repeated freeze-thaws.
Stability:	Stable for 12 months from date of receipt.
Predicted Protein Size:	30.82 kDa
Gene Name:	interleukin 2 receptor subunit alpha
Database Link:	<a href="#">NP_000408</a> <a href="#">Entrez Gene 3559 Human</a> <a href="#">P01589</a>



[View online »](#)

**Background:**

The interleukin 2 (IL2) receptor alpha (IL2RA) and beta (IL2RB) chains, together with the common gamma chain (IL2RG), constitute the high-affinity IL2 receptor. Homodimeric alpha chains (IL2RA) result in low-affinity receptor, while homodimeric beta (IL2RB) chains produce a medium-affinity receptor. Normally an integral-membrane protein, soluble IL2RA has been isolated and determined to result from extracellular proteolysis. Alternately-spliced IL2RA mRNAs have been isolated, but the significance of each is presently unknown. Mutations in this gene are associated with interleukin 2 receptor alpha deficiency.[provided by RefSeq, Nov 2009]

**Synonyms:**

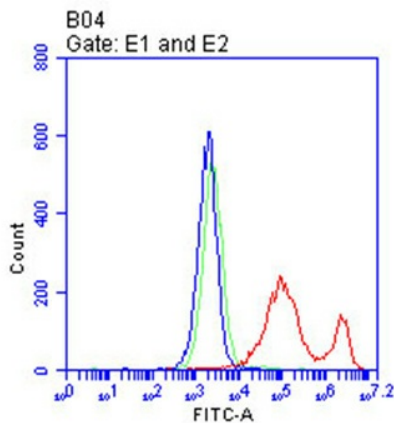
CD25; IDDM10; IL2R; IMD41; p55; TCGFR

**Protein Families:**

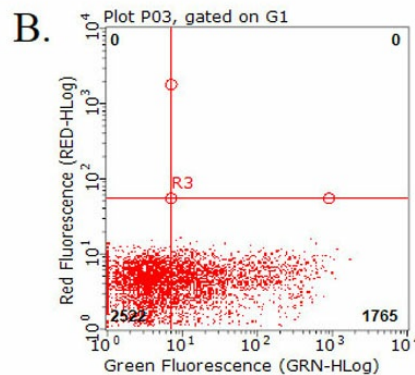
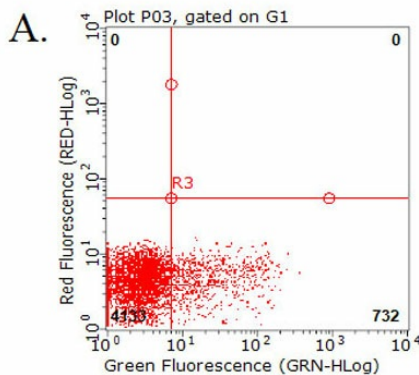
Druggable Genome, ES Cell Differentiation/IPS, Transmembrane

**Protein Pathways:**

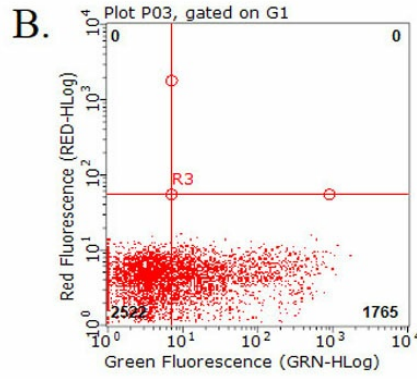
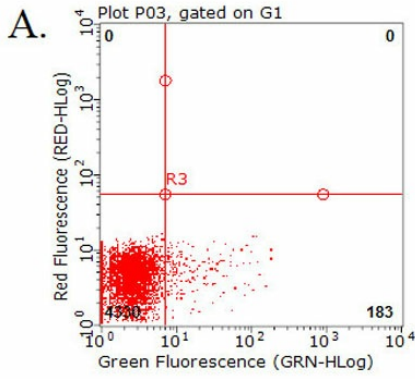
Cytokine-cytokine receptor interaction, Endocytosis, Hematopoietic cell lineage, Jak-STAT signaling pathway

**Product images:**


Flow cytometric analysis of living 293T cells transfected with IL2RA overexpression plasmid ([RC215768]), Red/empty vector ([PS100001], Blue) using anti-IL2RA antibody ([TA813473]). Cells incubated with a non-specific antibody (Green) were used as isotype control. □1□100□



Flow cytometric analysis of living PBMCs treated with 10ug/ml PHA for 72h (Right)/untreated (Left) using anti-IL2RA antibody ([TA813473]).(1:100).



Flow cytometric analysis of living PBMCs treated with 10ug/ml PHA for 72h using anti-IL2RA antibody ([TA813473])(Right). Cells incubated with a non-specific antibody (Left) were used as isotype control.(1:100).